



WOONASQUATUCKET RIVER
WATERSHED COUNCIL

2024 ANNUAL REPORT



**WOONASQUATUCKET RIVER
WATERSHED COUNCIL**

45 Eagle Street, Suite 202, Providence, RI 02909
(401) 861-9046
wrwc.org

TABLE OF CONTENTS

A Letter from Our Leaders	3
Mission, Vision and Values	5
2024-2025 Board and Staff	6
Our Watershed	9
Woonasquatucket River Greenway	10
Programs	
<i>River Rangers</i>	12
<i>Climate Resilience and Habitat Restoration</i>	14
<i>Community Action</i>	16
<i>Bicycle Education</i>	18
<i>Environmental Education</i>	20
<i>Events and Recreation</i>	22
Financials	26
<i>Partners</i>	26
<i>Corporate, Foundation, and Institutional Supporters</i>	27
<i>Donors</i>	28
2025-2029 Strategic Plan	31
Fundraising and Support	32
Get Involved	34

MANY PATHS, ONE RIVER

When we talk with folks about the Woonasquatucket River Watershed Council, we're reminded that our work is not always easy to define. Are we bicycle advocates? Environmental educators? Community organizers? River stewards? Yes—and more. Our many paths toward a clean Woonasquatucket River and a thriving Greenway are our greatest strength. As this report shows, when we offer many ways for people to get involved with the Woonasquatucket River and Greenway, everyone can find their place.

Like the ecosystems we're restoring, robust systems are complex. This complexity provides resilience, especially in uncertain times. We're adaptable because we're multifaceted, and we're grateful to the many partners, donors, and supporters who understand and invest in our vision.

2024 marked significant milestones. Because you have invested in and partnered with us, we're thrilled that after years of planning, we launched our first major construction projects in a decade—including the Manton outdoor classroom and other improvements in Johnston, and the start of the multiuse path along Kinsley Avenue and Promenade Street in Providence.

Throughout 2024, we also engaged a wide range of stakeholders to develop our 2025–2029 Strategic Plan, which shares three deeply connected goals:



VIEW THE STRATEGIC PLAN
tinyurl.com/wrwcstrat25



COMMUNITY

By 2030, lift up 8,000 residents to be environment, justice, and climate role models in their communities.

WATERSHED

By 2040, make all of the Woonasquatucket River clean, fishable, and swimmable, and minimize flooding disasters.

GREENWAY

By 2040, ensure 80,000 people are within a 10-minute walk of a safe, welcoming, and activated multi-use trail and natural area connecting North Smithfield and Providence.

The strategic planning process itself was a turning point, offering direction for a dynamic future. To learn more about how we're going to get there, we invite you to spend time with the **2025–2029 Strategic Plan**.

Thank you for believing in us, being with us, and investing in us. Your commitment keeps this vital, living system thriving today and for generations to come.

With gratitude,

Laureen Ratti
President, Board of Directors

Alicia J. Lehrer
Executive Director



WHY WE DO WHAT WE DO

MISSION

Create positive environmental, social, and economic change by revitalizing the Woonasquatucket River, its Greenway, and its communities.

VISION

A clean Woonasquatucket River and thriving Greenway for all to lead healthy lives.

VALUES

TENACIOUS INNOVATION

We overcome constraints with boldness, resourcefulness, and an entrepreneurial spirit, and we hope for a better future. We're scrappy and we get things done.

COMMUNITY STEWARDSHIP

We work toward establishing intergenerational habits of stewardship for our natural and human resources, elevating the community to continue the work.

HUMANS AND NATURE TOGETHER

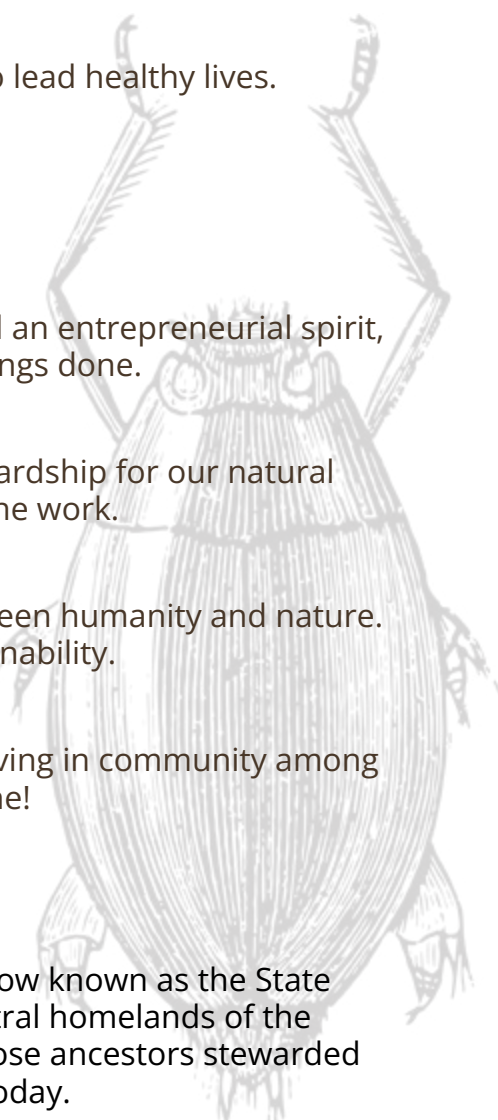
We believe placemaking happens in the interconnection between humanity and nature. We have a holistic vision for community flourishing and sustainability.

ACCESSIBLE JOY

We share in the accessible and collective joy of creating and living in community among thriving natural resources—and our parties are second to none!

LAND ACKNOWLEDGMENT

The Woonasquatucket River Watershed is located in what is now known as the State of Rhode Island, on unceded territory that is within the ancestral homelands of the Narragansett Indian Tribe. The Narragansett Indian Tribe, whose ancestors stewarded these lands with great care, continues as a sovereign nation today.



WHO WE ARE

BOARD OF DIRECTORS

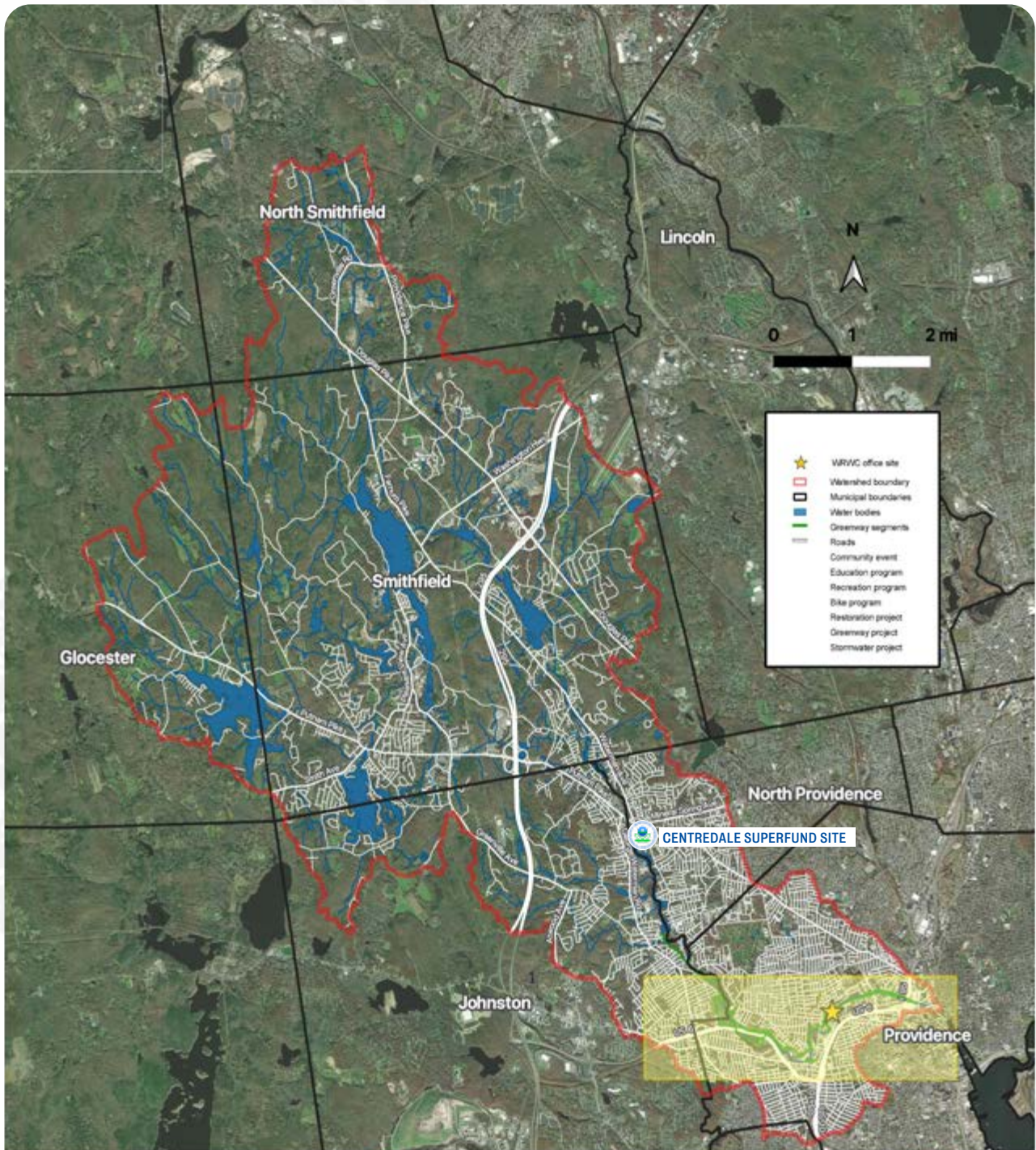
Laureen Ratti – *President*
Christopher Riely – *Vice President*
John Flaherty – *Secretary*
Brian Platt – *Secretary*
Jennifer Lisi – *Treasurer*
Michael Hanley
William Lawrence
Daphne Sarcia
Douglas A. Stephens
Elder Gonzalez Trejo
Jennifer Recinos
Martina Haggerty
Eric Wagner

2024 STAFF

Miosotis Alsina – *Director of Community Programs*
Sayda Arriaza – *Nuevas Voces and Campeones Co-Facilitator*
Lisa Aurecchia – *Director of Projects*
Liza Baptista – *Finance and Human Resources Director*
Sam Blair – *Stormwater Specialist*
Amanda Blevins – *Recreation Co-Director*
Clare Brown – *Events and Advocacy Coordinator*
Brandon Bristow – *Assistant Bicycle Educator*
Tristan Corona – *Stormwater and Enterprise Steward*
Ceci Cano – *English/Spanish Translator and Interpreter*
Christopher Dalpe – *Communications Manager*
Jill Davidson – *Director of Development and Communications*
Peter Dear – *Greenway Manager*
Andrew deLisle – *Senior River Ranger*
Luis Escano Reynoso – *Stormwater and Enterprise Steward*
Pedro Espinal – *Resilience Hub Manager*
Haley Essington – *Community Resilience Liaison*
Madi Garvin – *River Ranger*
Jacob Gorke – *Greenway Manager*
Donny Green – *Bicycle Program Director*
Rebekah Greenwald – *Director of Grants*
María José Gutierrez-Paz – *Nuevas Voces Co-Facilitator*
Kuno Haimbodi – *TerraCorps Land Stewardship Coordinator*
Milo Harris – *TerraCorps Land Stewardship Coordinator*
Jarrod Holgate – *Stormwater and Enterprise Steward*
Adonis “AJ” Javier – *Stormwater and Enterprise Steward*
India Jencks – *Land Preservation Manager*
Colleen Keenan – *Events and Outreach Coordinator*
Mackenzie Kourie – *River Ranger*
Alicia Lehrer – *Executive Director*
Gianna Lourenco – *Out-of-School-Time Coordinator*
Phil Mattes – *Bicycle Program Manager*
Jenny Mercado – *New Voices/Nuevas Voces Co-Facilitator*
David Morales – *Director of Community Action*
Alby Pearson – *River Ranger*
Amanda Peavey – *Education Director*
Mark Pereira – *Civil Engineer*
Angela Salado – *Education Intern*
Micah Santow – *Engineering Intern*
Randy Simas – *Education Intern*
Erik Talley – *Recreation Co-Director*
Nautica Vargas – *Environmental Educator*
Violet Windham – *Development Associate and Administrative Assistant*
Nicole Wright – *TerraCorps Community Engagement Coordinator*
Bridget Zwack – *Environmental Engineer*







OUR WATERSHED

Spanning 19 miles from its headwaters in North Smithfield to its confluence with the Moshassuck River in downtown Providence, the Woonasquatick flows through a watershed that covers 50 square miles and includes seven Rhode Island towns. Its name, meaning *“the place where the salt water ends,”* reflects the river’s tidal reach and deep cultural roots. Along its path are legacies of farming, fishing, and industry that shaped the region’s homes, mills, and neighborhoods—and helped Providence become a hub of art, industry, and culture.



The Woonasquatick River watershed is one of Rhode Island’s most diverse, stretching from rural forests and farms in the north to densely populated urban neighborhoods in the south. This mix of land uses creates both valuable natural resources and complex environmental challenges. The watershed is rich in wetlands, forests, rivers, and ponds—natural systems that filter water, support wildlife, and connect communities. Water is constantly on the move here, flowing across the land and underground before joining the Woonasquatick River and eventually reaching Narragansett Bay. In the northern and central areas, many residents rely on groundwater wells, making it especially important to protect both surface and underground water sources. Rhode Island’s porous soils allow water to move quickly, highlighting the need for careful land and water stewardship across the entire watershed.

SPOTLIGHT ON CENTREDALE MANOR

The Centredale Manor Superfund Site is located at Smith Street in North Providence, Rhode Island. From the 1940s through the 1970s, chemical manufacturing at this site released dioxins and other hazardous substances directly into the ground and nearby waterways. These pollutants contaminated the soil, groundwater, surface water, and sediments—particularly in the adjacent Woonasquatick River and downstream ponds. Over time, the toxins spread along the riverbanks and into connected ecosystems.

The Centredale Manor Superfund Cleanup Project began in 2018 to remove dioxin and other dangerous chemicals from the Woonasquatick River. Under oversight of the U.S. Environmental Protection Agency (EPA) and the Rhode Island Department of Environmental Management (RIDEM), this work progressed in phases along the 1.5 miles of the river. During this project, the WRWC has coordinated closely with EPA, RIDEM, North Providence, Johnston, and cleanup contractor Loureiro Engineering to restore native ecosystems to the affected area and to identify disposal solutions for the harmful waste that has resulted from the cleanup efforts.

The Centredale Manor Superfund Cleanup Project site in North Providence and Johnston marks a “hard stop” to safe primary contact with the Woonasquatick River’s waters. As the Centredale Project progresses and eventually concludes, we will have made great progress toward a river free from harmful chemicals.

THE GREENWAY

The Woonasquatic River Greenway is at the heart of our vision to restore both the river and the communities it touches. What began in 1993 as a bold idea to reclaim a neglected resource has grown into a vibrant, evolving network of parks, restored lands, and a seven-mile multi-use trail that serves as a linear park and vital connection between neighborhoods. Stretching from Providence to Johnston and into Smithfield, the Greenway provides safe spaces for walking, biking, gathering, and growing—physically, socially, and ecologically.



PARKS & GATEWAYS

The Woonasquatic River Greenway is more than a just a path. Along its route, once-neglected lots, dumping grounds, and forgotten corners are being reimagined as vibrant parks, beloved gathering spots, and gateways to nature. WRWC helps lead this transformation, working alongside neighbors to build green spaces that inspire play, promote health, and restore pride in place. From bike paths and soccer fields to pocket parks and skate spots, each location tells a story of change, connection, and community.



ART ON THE GREENWAY

Art brings the Greenway to life. From murals to sculptures, local artists help tell the story of the river, the neighborhoods, and the people who live here. WRWC works with artists from places like Olneyville and the Valley to bring creativity into public spaces—making the Greenway more fun, more beautiful, and more connected to the community.



RECREATION & EVENTS

We organize community events, recreation activities, neighborhood gardens, and more on the Greenway. From guided paddle trips and bike rides to park cleanups, plantings, and public art, we create opportunities for people to connect with the river, their neighbors, and the outdoors—all while building a healthier, greener watershed.



SMITHFIELD FIRST MILE

Design is underway for the first mile of the Greenway in Smithfield, expanding the multi-use trail and connecting more communities to the watershed.



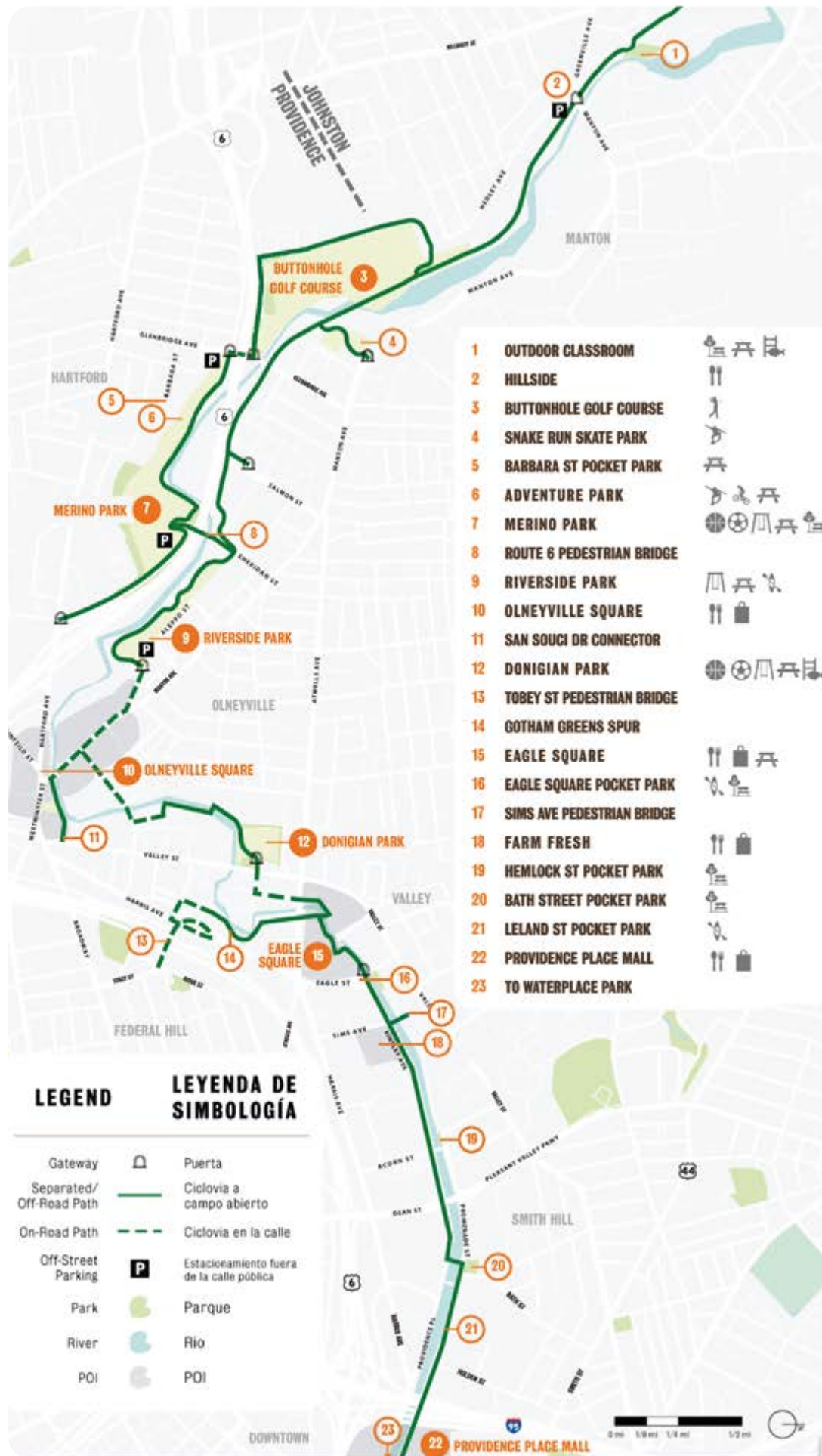
GROWTH IN PROVIDENCE

The Woony Adventure Park was completed, Gotham Greens Spur added 2,000 pollinator plants, Eagle Square gained new bike lanes, and Kinsley & Promenade moved forward with a mile-long multi-use trail.



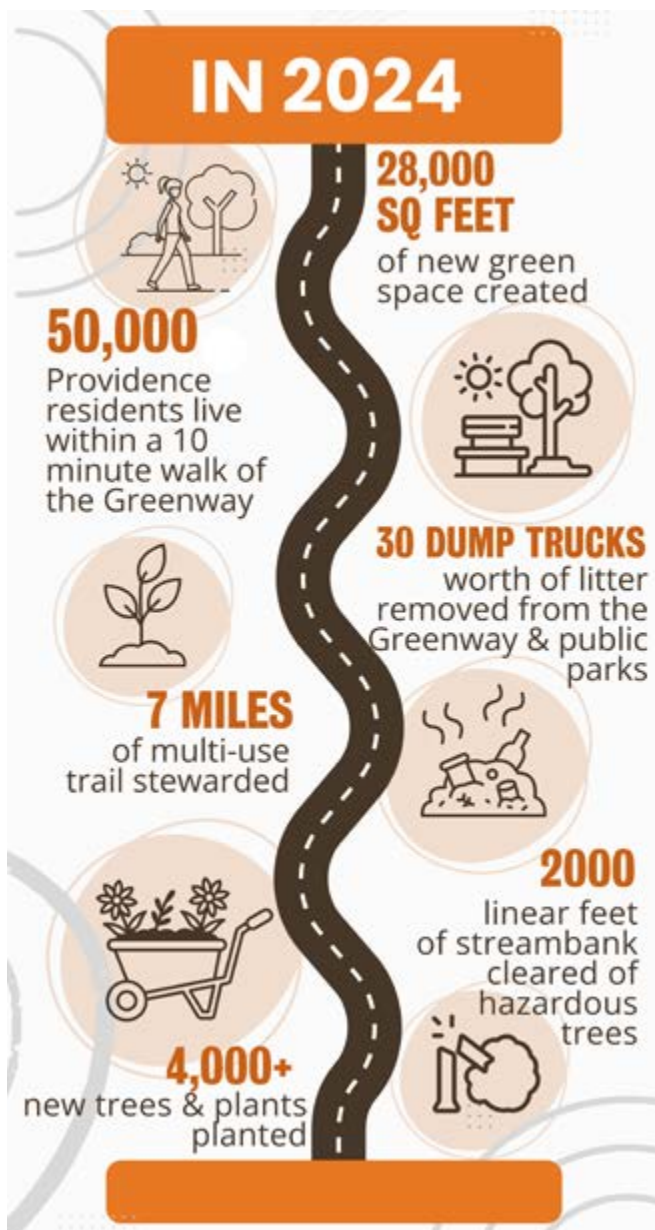
OUTDOOR CLASSROOM

The Manton Outdoor Classroom and Native Plant Garden in Johnston was completed—creating a new space for environmental learning, habitat restoration, and community connection.



RIVER RANGERS

"Everything is connected! What we do on land affects what happens in the water, what we do in cities impacts life in less dense areas, and vice versa." -Peter Dear



The River Rangers are the heart and hands of the Woonasquatucket River Greenway, caring for its trails, parks, and the communities they connect. As stewards of both land and water, Rangers maintain wild and urban green spaces, lead clean-ups, and work alongside local artists to bring beauty and vibrancy to the Greenway. They help keep the river healthy from below the banks—learning to paddle, studying the local ecosystem, and building green infrastructure to protect against flooding and pollution. From mowing to mural-making, their work makes the Greenway safer, stronger, and more welcoming for all.





BLOOM BOOM

Our Community Action and River Ranger team joined forces and brought over **50 neighbors** together for Donigian Park Clean Day in October, planting **2,000 crocus corms** and native species, removing **14 50-gallon contractor bags** worth of trash, and cutting back invasive knotweed. Thanks to Garden Time, Bloom RI, Zero Waste Providence, and a Litter-Free RI microgrant for supporting this joyful day of cleanup.



COMMUNITY CLEANUP POWER

WRWC hosted **31 Greenway Clean Days** in 2024, with **708 volunteers** across four towns, including school, corporate, and community-led groups.



EARTH MONTH IN ACTION

Hundreds of volunteers turned out in April for cleanups/planting events, including our Earth Day effort with **180 volunteers** in Providence.



TRAINING FOR GREEN JOBS

We led **six workforce development days**, helping participants build skills and connections within the watershed and beyond.



CATCHING TRASH

With Cox Communications' support, we installed a Bandalong Bandit™ litter trap at Eagle Square, capturing over **315 pounds of waste and recyclables**.



GREENER GOTHAM GREENS

Over **2,000 pollinator plants** now bloom along the Gotham Greens spur, turning a remediated brownfield into a thriving, resilient trail.



TREES ON THE GREENWAY

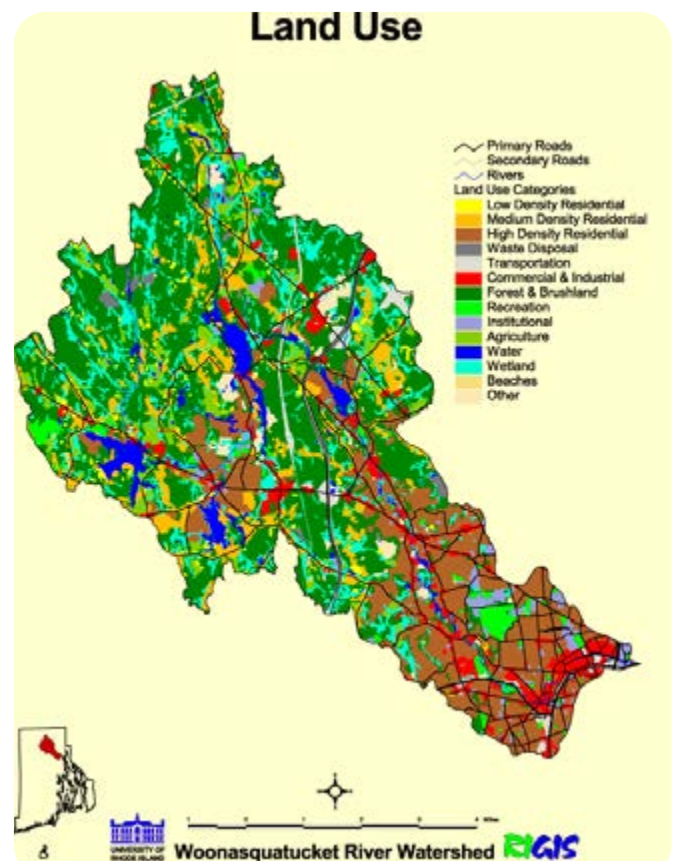
30 native trees were planted along the WRWC Greenway in Johnston through a volunteer effort with Citizens Bank, Plant-It Food, and the Arbor Day Foundation.

CLIMATE RESILIENCE AND HABITAT RESTORATION

"I love the idea that someday what was once polluted water will be safe for wading (or swimming) again!" -Emily Bryant



WRWC protects the Woonasquatucket River's ecosystem through native habitat restoration, invasive plant removal, and nature based stormwater infrastructure. We monitor the success of these initiatives by tracking fish populations, monitoring water quality, and advocating for the Centredale Manor Superfund Cleanup Project site. These projects improve water quality, reconnect and restore wildlife habitats, and reduce flooding and summer heat—especially in vulnerable areas prone to flooding and erosion.





IMPROVED GREENWAY MULTI-USE TRAIL IN JOHNSTON

WRWC completed projects in Johnston to support native habitats, stormwater management, and community learning—including an **outdoor classroom**, **streambank restoration**, and **pollinator gardens**.



STUMP POND WATER CHESTNUTS

In partnership with RIDEM, WRWC removed over **2,000 pounds** of invasive water chestnuts from Stump Pond in Smithfield this summer.



TRACKING RIVER HEALTH

Volunteers counted **1,745 river herring** this spring—an increase over 2023—and monitored water quality through the summer.



PROJO MOJO

Replaced asphalt with **green space** at the Providence Journal facility on Kinsley Ave to fight flooding and improve water quality.



DAM-IT

Heavy rain and weather damaged the top of the Riverside Dam, making the fish passage unusable—**the next step is its removal**.



PUERTA DE REFUGIO BASIN REPAIRS

Heavy rains eroded stormwater basins at the church in Providence. We **reinforced** them with soil, seed mix, and eco-friendly materials.

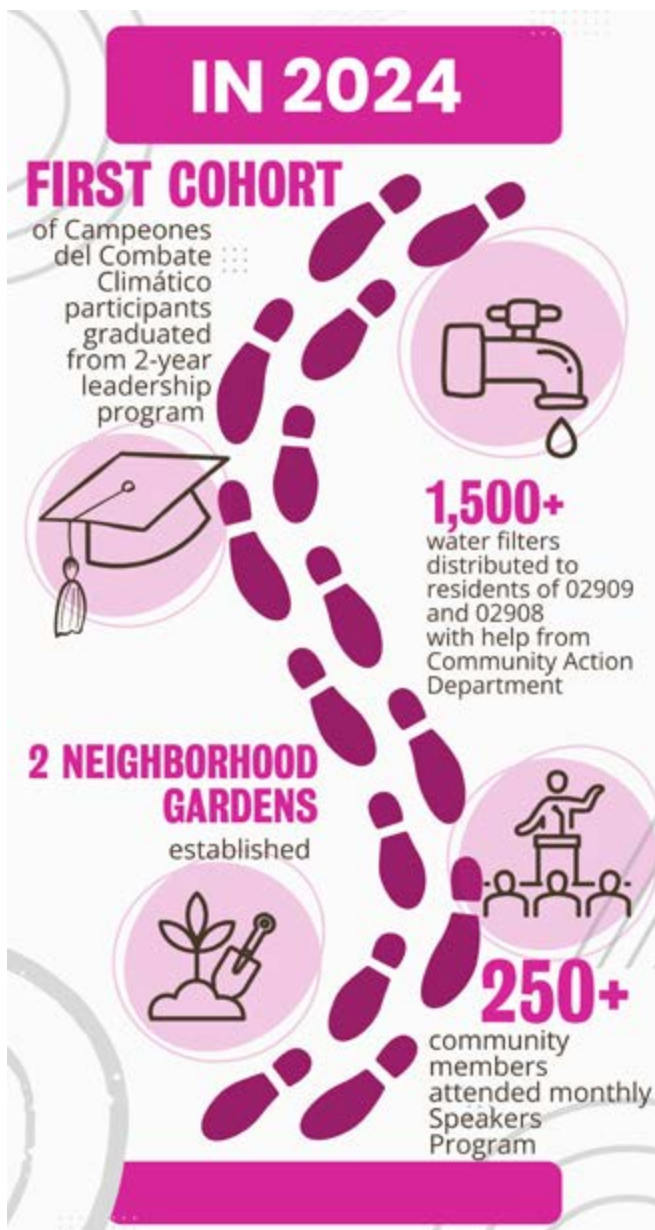


LYMAN AVENUE

WRWC and Groundwork RI cleared stormwater swales at Lyman Ave in Johnston, reducing flooding and improving Greenway access.

COMMUNITY ACTION

"The Nuevas Voces program has greatly impacted the way I now live my day to day. I'm more aware of my responsibility as a member of a community."
-Gaby Siles



WRWC's Community Action programs empower residents of the lower Woonasquatucket River Watershed through bilingual leadership training, community organizing, and free, family-friendly events. Rooted in equity and collaboration, this work ensures that local voices shape the future of their neighborhoods and the river itself. Through programs like Nuevas Voces and Campeones del Combate Climático, WRWC cultivates local environmental leaders who influence policies, infrastructure, and public health in their own neighborhoods. The Olneyville Resilience Hub serves as a central gathering space for education, emergency preparedness, and resource-sharing, while neighborhood gardens, speaker programs, and digital tools like VECINA promote sustainability, civic engagement, and access to vital services.



Olneyville Resilience Hub



SPEAKERS PROGRAM CONNECTS NEIGHBORS WITH TOOLS FOR RESILIENCE AND ACTION

WRWC hosts a monthly bilingual Speakers Program at the Olneyville Resilience Hub designed to connect residents with practical knowledge, local resources, and one another. These open community meetings attracted more than **250 participants in 2024**, creating space for learning, conversation, and direct access to local experts. Topics have ranged from lead safety with the Childhood Lead Action Project to composting with Zero Waste Providence, waste management with the Department of Public Works, and winter storm preparedness with the Providence Emergency Management Agency. As one of the Hub's most consistent and well-attended programs, the Speakers Program is helping to build a more informed, connected, and resilient Olneyville.



VECINA.WRWC.ORG GOES LIVE

VECINA, a multi-lingual data access application, connects **Spanish-speaking residents** to school and healthcare information, thanks to a partnership with Bates College, Brown University, and national research collaborators.



RESILIENCE HUB OPENS

Since opening in January, the Olneyville Hub has been a bilingual community anchor for **classes, workshops, climate resources**, and a lead-free water filter distribution effort.



WRWC WINS EPA SOAR GRANT

The EPA honored WRWC with a **SOAR Award** to support environmental justice, climate preparedness, and workforce development across the lower Woonasquatucket Watershed.

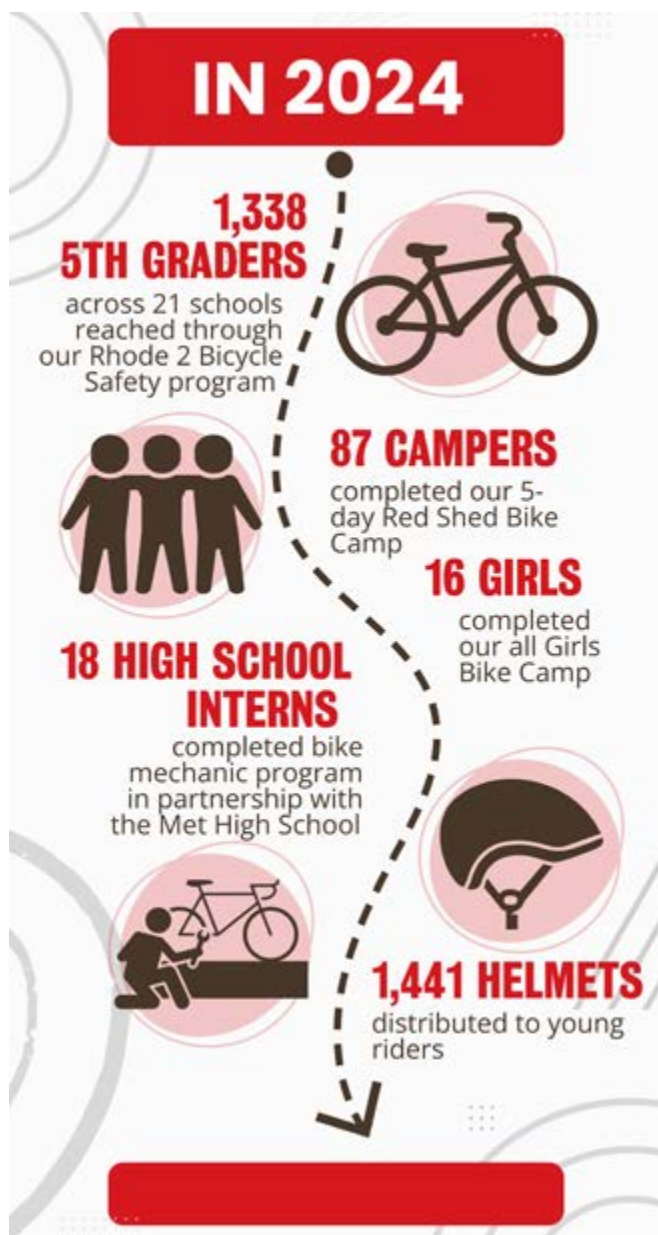


CAMPEONES GRADUATION

Seven local leaders completed WRWC's first 18-month climate resilience program, gaining skills to plan, implement, and advocate for climate resilience projects in their own communities.

BICYCLE EDUCATION AND ADVOCACY

"I loved bike camp because we got to learn to ride our bikes and then we rode our bikes back and forth to different locations. It was so much fun!"
-Red Shed Camper



Our Bicycle Education programs make biking safe, fun, and accessible for youth and families along the Woonasquatucket River Greenway and beyond. We offer year-round programs including the Rhode to Bicycle Safety (R2BS) course for 5th graders. We also offer summer youth Bikes Camps that are designed to build confidence, teach helmet safety, bike maintenance, and rules of the road. Serving over 1,300 students annually, our bike programs combine classroom learning with hands-on riding to empower young riders to navigate their communities safely and independently. Scholarships for camps ensure all kids can participate, with a special focus on beginners to embrace cycling as a lifelong skill and way to connect with nature.

RHODE   
TO BICYCLE SAFETY
RED SHED BIKE CAMP




FEDERAL ADVOCACY

WRWC met with Rep. Seth Magaziner to discuss funding for **in-school bike programs**, upgrades to **Merino Park**, and how Rhode Island can model **national bike safety** education efforts.



BIKE ED BY THE NUMBERS

In 2024, our bike education programs served **1,338** 5th graders, **121** campers and interns, and distributed **1,441** helmets to support safe, confident riding for youth across Rhode Island.



BIKE CAMP GRADUATION

87 youth completed Red Shed Bike Camp in 2024, marked by a joyful graduation with families, partners, and stories from campers about biking, confidence, and exploring their watershed.

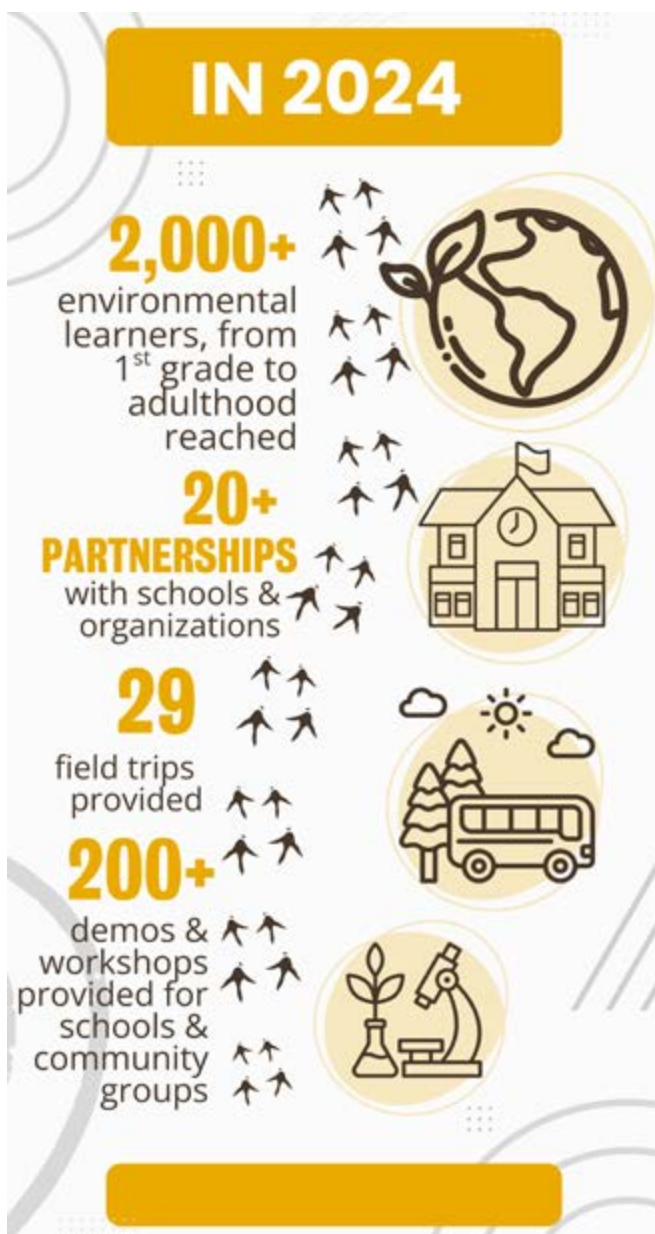


TREK INTERNS

Now in its third year, the WRWC Trek Internship at The Met trained **12 students** in hands-on bike mechanics. **8** earned Level 1 Technician Certification in January 2024, gaining real-world skills for future careers.

ENVIRONMENTAL EDUCATION

"...best field trip I've ever been on! I'm so grateful for you guys teaching us about the Woonasquatucket Watershed. I learned so much about it! - Annabelle



Our education programs spark a lifelong connection to the Woonasquatucket River by bringing high-quality, hands-on science and nature learning to youth across the watershed. From kindergarteners discovering bird beaks and brook trout to high schoolers leading community projects, over 2,000 students each year explore, investigate, and care for their local environment with us. Whether in-school, after-school, or out on the trail, our lessons combine watershed science, outdoor adventure, and real-world problem-solving to build the next generation of environmental leaders.





EDUCATION PROGRAM HIGHLIGHTS

WRWC's Education Team led **6 electrofishing** outings, **15 field trips**, and mentored **8 Environmental Leaders**. Students raised trout, studied birds and mindfulness, explored the river with River Adventurers, and tackled real-world issues through hands-on projects in the Woonasquatucket watershed.



EDUCATION IMPACT

WRWC reached over **2,000 learners** this year through in-school and out-of-school programs with **20+ schools** and community partners across the watershed.



SMITHFIELD EDUCATION CENTER

In May, WRWC opened the **Leo Bouchard Conservation Center** in Smithfield to support stormwater education, outdoor recreation, and community resilience.



SUMMITS & CONFERENCES

WRWC showcased our RI DEM-backed **"Fish in the Classroom" program** at the RAE Summit, NAAEE Conference, and RIEEA Summit. We also joined 300+ experts at the 2024 Coastal & Estuarine Summit to explore **coastal conservation strategies**.



OUT-OF-SCHOOL TIME PARTNERSHIPS

Through PASA's AfterZone, Onward We Learn and YWCA, WRWC helped deliver STEM and environmental programming across **five Providence middle schools** and citywide sites.

RECREATION AND EVENTS

"Hiking not only allowed me to appreciate the beauty of nature, but also gave me a new understanding of my own life... I was never enthusiastic about outdoor activities and disliked strenuous tasks. But at that moment, I experienced the emotions of someone who loves the outdoors and nature. I realized that my past life was so limited... Meeting new friends during travel not only broadens one's horizons, but also brings great joy."
-George Hartman



Our recreation and events programs invite people of all ages to connect with the Woonasquatucket River through outdoor adventures, cultural celebrations, and community-building experiences. From guided paddle trips and trail rides to neighborhood festivals and volunteer days, we create fun, welcoming opportunities to explore the Greenway, celebrate local history, and strengthen our shared commitment to a cleaner, healthier watershed.



In 2024, we said farewell to our legendary Recreation Co-Directors, Amanda Blevins and Erik Talley. With care, dedication, and humor, Amanda and Erik transformed walks, rides, and paddles into moments of discovery and celebration along the Woonasquatucket River Watershed and Greenway—for thousands. Thank you both for everything.



FISH FUN(D) FUNDRAISER

We raised over **\$18K** at our first Fish Fun(d) party at Buttonwoods Brewery! Huge thanks to our community, DJs, bike riders, partners, and costume stars.



FREE WEEKLY COMMUNITY PADDLES

From Providence to Johnston, **over 250 paddlers** joined us in 2024 to explore the Woonasquatucket by canoe and kayak. For many it was their first introduction to the river and the WRWC.



WINTER SOLSTICE HIKE

15 folks braved the snow to celebrate the solstice on Stillwater Scenic Trail with poems, mindfulness, and mushrooms! Thanks to everyone who joined this magical winter hike and shared the joy of the season.



WRWC ANNUAL HOLIDAY PARTY

Over 100 friends gathered for our Holiday Party with music, food, drinks, and amazing community vibes. Thanks to our hosts, sponsors, and volunteers for making it a joyful night to celebrate a big year—and toast to what's next!



CITY COUNCIL GREENWAY TOUR

Providence City Council members joined us for a sunny **tour of the Woonasquatucket River Greenway!** From Riverside Park to Promenade-Kinsley, we shared progress, future plans, and sandwiches. Grateful for their partnership!



SPOTLIGHT: 15 MINUTE FIELD TRIPS

Our partnership with 15 Minute Field Trips brings fun, science-packed adventures to the Greenway! **Seasonal hikes and workshops** spark curiosity, teach environmental stewardship, and connect people of all ages to nature.

FINANCIALS

2024 PROFIT & LOSS

WOONASQUATUCKET RIVER WATERSHED COUNCIL PROFIT AND LOSS JANUARY – DECEMBER 2024

INCOME

Federal Grants	\$2,385,263	51%
Foundation Grants	\$230,412	5%
Other Grants	\$487,982	10%
State Grants	\$1,221,521	26%
Donations	\$177,312	4%
Earned Income	\$146,304	3%

TOTAL INCOME

\$4,648,794 100%

EXPENSES

Admin and Operations	\$276,552	7%
Fundraising	\$162,369	4%
Greenway and Multi-use path	\$2,520,257	63%
Program Expenses	\$1,040,282	26%

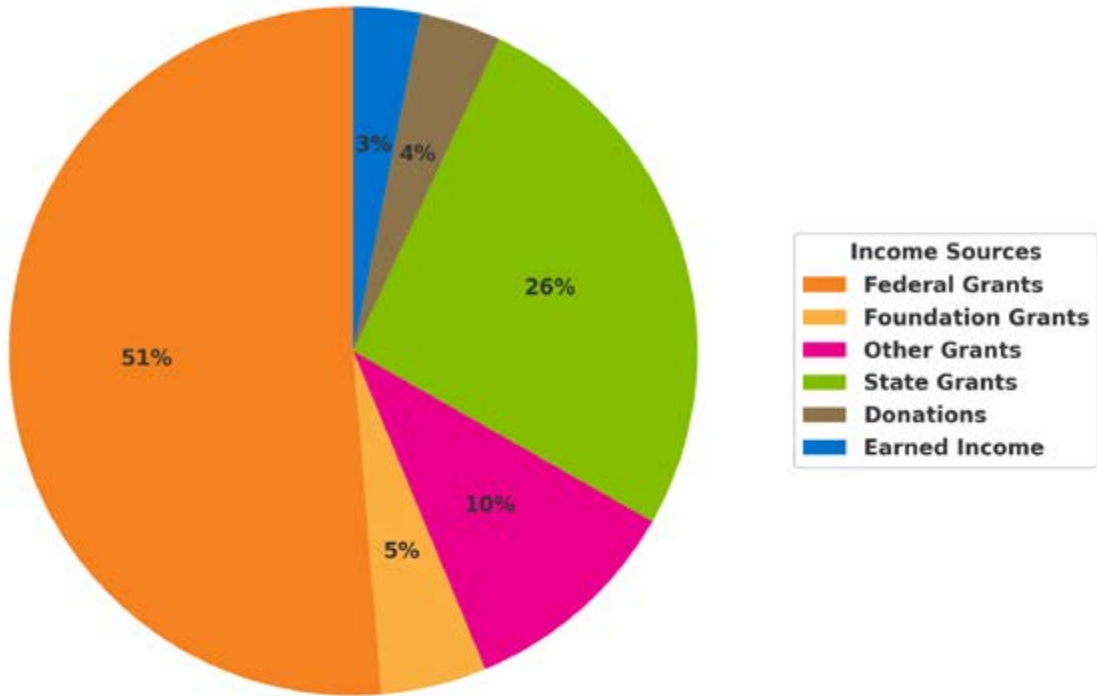
TOTAL EXPENSES

\$3,999,460 100%

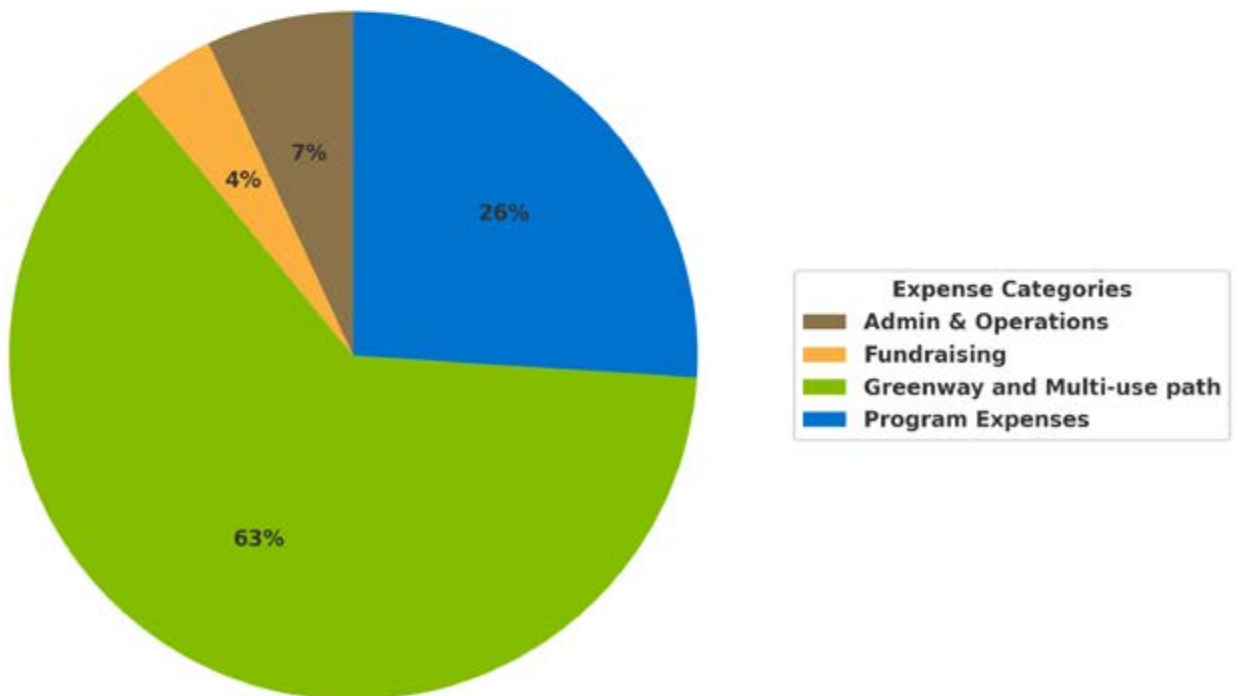
INCOME LESS EXPENSES

Funds carried forward to 2025 to continue Greenway Projects	\$649,333
---	-----------

INCOME 2024



EXPENSES 2024





PARTNERS

WE ARE GRATEFUL TO WORK WITH A VIBRANT NETWORK OF NONPROFITS, MUNICIPALITIES, AND AGENCIES IN THE COMMON PURSUIT OF A CLEANER, GREENER, AND SAFER RHODE ISLAND. MANY THANKS TO OUR 2024 PARTNERS!

15 Minute Field Trips
Bates College
Big Brothers Big Sisters of Rhode Island
Brown University Swearer Center for Public Service
Building Futures
Central Providence Opportunities Equity Zone
Childhood Lead Action Project
City of Providence Health Equity Zone
Coalition for a Multilingual RI
Cozy Rhody
Edge & End
Environment Council of Rhode Island
Evaluators Network of Rhode Island
Farm Fresh Rhode Island
Friends of Smithfield Cemeteries
Garden Time
Gordon School
Gotham Greens
Groden Network
Groundwork Rhode Island
Johnston Mayoral Youth Group
Kids Klub
LaSalle Academy
Metropolitan Regional Career and Technical Center
North Providence Public Library
North Providence Public Schools
Nuestro Mundo Public Charter School
Olneyville Resilience Hub
ONE Neighborhood Builders/Central Providence Opportunities Equity

Zone
Onward We Learn
Partnership for Providence Parks
Paul Cuffee Lower School
Providence After School Alliance
Providence College
Providence Department of Public Works
Providence Emergency Management Agency
Providence Neighborhood Planting Program
Providence Parks Department
Providence Public Schools
Providence Recreation Department
Providence Stormwater Innovation Center
Providence Street Coalition
Providence Urban Wildlife Conservation Partnership
Revive the Roots
Rhode Island Bicycle Coalition
Rhode Island Department of Administration
Rhode Island Department of Health
Rhode Island Digital Equity Workgroup
Rhode Island Division of Statewide Planning
Rhode Island Energy
Rhode Island Environmental Education Association
Rhode Island Flood Mitigation Association
Rhode Island Green Infrastructure

Coalition
Rhode Island Paths to Progress
Rhode Island Rivers Council
Rhode Island Traffic Safety Coalition
Rhode Island Transportation Advisory Committee
Rhode Island Tree Council
Rhode Island Wild Plant Society
RIOS Institute
River Network
Smith College Statistical and Data Sciences Program
Smithfield Conservation Commission
Smithfield Land Trust
St. Augustine School
TerraCorps
The Greene School
The Groden Network
Town of Glocester
Town of Johnston
Town of North Providence
Town of North Smithfield
Town of Smithfield Department of Recreation
Town of Smithfield
Tri-County Health Equity Zone
United States Environmental Protection Agency
United Way of Rhode Island
University of Rhode Island Coastal
University of Rhode Island Watershed Watch
Wheeler School

CORPORATE, FOUNDATION & INSTITUTIONAL SUPPORTERS

OUR WORK IS MADE POSSIBLE BY THE INCREDIBLE SUPPORT OF DOZENS OF FUNDERS AND PARTNER ORGANIZATIONS. THEY'VE HELPED POWER EVERY WRWC PROGRAM THIS YEAR—AND MANY HAVE BEEN WITH US FOR YEARS. WE'RE SO THANKFUL TO HAVE THEM IN OUR COMMUNITY. ORGANIZATIONS THAT PROVIDED IN-KIND SUPPORT ARE MARKED WITH AN ASTERISK (*).

AAA Northeast
AARP Community Challenge Grant
AARP Rhode Island
Bank RI
BankNewport
Bella Luna Bar & Grill *
BETA Group, Inc.
Bloom Rhode Island
Brady Sullivan
Brewster Thornton Group Architects
Brier and Brier
Cardi's Furniture and Mattresses *
City of Providence
City of Providence Department of Public Works
City of Providence Department of Sustainability
Coastal Resources Management Council
Coca Cola Beverages Northeast *
Contech Medical Inc., A UFP Technologies Company
Cox Communications
Cox Enterprises
Cushman & Wakefield, Inc.
DiCenzo, Inc.
Edge & End
Enviro Clean
Epi Vax, Inc.
Epiphany Communications
Frederick H., William, & Frederick H. Banspach Memorial Fund
Frederick Lippitt Endowment Fund for the Woonasquacket River Watershed
Fresh Pita Smithfield *
Fuss & O'Neill
Gather Wealth Management *
Gotham Greens *
Groundwork Rhode Island
Harkins Wealth Management

Hope Library Association
Horsley Witten Group
Industrial Container Company *
Innovo Storage Systems *
Insperity
JF Moran
June Rockwell Levy Foundation
Locke Lord
Loureiro Engineering Associates, Inc.
Manafort Brothers Incorporated
Manchester Street Station
Mandel & Tracy, LLC
Mary Dexter Chaffee Fund
Moniker Brewery *
Narragansett Bay Commission
Narragansett Bay Estuary Program
Narragansett Bay Watershed Restoration Fund
Narragansett Beer *
National Fish & Wildlife Foundation
Navigant Credit Union
New England Grassroots Environment Fund
Nordic Group, Inc.
Ocean State Charities Trust
ONE Neighborhood Builders/CPO-HEZ Nine Neighborhoods Fund
Oomph, Inc.
Papitto Opportunity Connection
Radius Recycling
REI Cooperative Action Fund
Restore America's Estuaries
Rhode Island Coastal Resources Management Council
Rhode Island Department of Environmental Management
Rhode Island Department of Health
Rhode Island Department of Transportation
Rhode Island Foundation
RIOS Institute

Roseland Wealth Management
Seven Stars Bakery *
Sherman Family Charitable Fund
Sherwin-Williams *
Signal Works
Stantec
Stop and Shop Manton Avenue
Sweet Birch Consulting, LLC
The Armory Revival Co.
The Champlin Foundation
The Dye House *
The Foundry Associates
The Nature Conservancy Rhode Island Chapter
The Washington Trust Charitable Foundation
Town of Smithfield
Trek Bikes *
UNFI Café *
United States Department of Agriculture Natural Resources Conservation Service
United States Environmental Protection Agency
United States Environmental Protection Agency Southeast New England Program
United Way of Rhode Island
United Way of Rhode Island Providence Equity Fund
University of Rhode Island Coastal Resources Center & RI Sea Grant
Vertex Pharmaceuticals
Veterans Memorial Auditorium (VETS)*
VHB: Vanasse Hangen Brustlin, Inc.

2024 DONORS

WE ARE GRATEFUL FOR EACH AND EVERY DONOR!
THOSE DONORS MARKED WITH AN ASTERISK (*)
ARE MONTHLY DONORS WHO COMPRISE THE
RETURNING RIVER HERRING SOCIETY.

GREAT BLUE HERON SOCIETY (\$10,000+)

Lizabeth Bourret and Tricia Harris *
Barry and Rebecca Preston

PAINTED TURTLE SOCIETY (\$5,000-\$9,999)

Anonymous
Anonymous
Rebecca Silliman

RIVER OTTER SOCIETY (\$1,000-\$4,999)

Anonymous
Anonymous
Anonymous *
Dean and Lisa Audet
Alan Barta
Nicholas Bauta
Anna Browder
Peter Case and Lucia Gill Case
Janet Coit
Jill Davis
James Dunn
Jonathan and Ruth Fain
Anne and Alan Fleischer
Steven Levine and Freeman Freeman
Carmela Gold *
Kim David Greenwood
Roberta Groch
Almon and Suzanne Hall
Michael Isenberg
William Lawrence
Theo Meyer
Peggy Sharpe
Jane and Deming Sherman
Merrill Sherman
Sally and Theodore Shwartz
Douglas Stephens and Linda Stanich
Shivan and Jyothi Subramaniam
Mark and Julia van Noppen

BLUEGILL SOCIETY (\$500-\$999)

Paula Bissell
Marjorie and William Davidson
The Eberdave Family
John Flaherty *
Martina Haggerty *
Andrew Gabor and Iris Bahar
Michael and Renee Hanley
Roberta Butler and Bott Ikeler
Clare King
Jennifer Lisi and Benjamin Finkel

Amber Ma *
Juan Mariscal
Ebony Mitchell
Cynthia Patterson
Brian and Samantha Platt *
Laureen Ratti

MONARCH BUTTERFLY SOCIETY (UP TO \$499)

Anonymous
Anonymous
Anonymous
Anonymous
Anonymous
Anonymous
Anonymous
Anonymous
Anonymous
Karen Abbott
Mark Allio
Sue Anderbois
Amanda Anglemyer
Lynne Angstadt
Steve and Anne Anthony
Ronald Archambault
Corey Auger
Amanda Babson
Belinda Bachand
Joe and Donna Baer
Sarah Baldwin
Leah Bamberger
Ms. Baptista
Geraldine Barry
Marcia Barton
Ayana Bass
Daniel Baudouin
Colleen Beals
Albert Behar
Chakeya Belins
Kyle and Eneida Bennett
Karlo Berger
Curtis Betts
Ellen Biegert
Cynthia Bisbee
Anthony Blair
Tim Blankenship
Deborah Block
Dana Borelli-Murray
Margaret Botelho
Justin Bousquin
Daria Brashear Phoebe

Beth Breinan
Doris Briggs
Robert Bright and Anne Bright
Richard Brooks
Debra Brown
Cody Brown
Marisa Brown
Jennifer and Stephen Brown
Chelsea Bryant
Emily Bryant
Paula Krebs and Claire Buck *
Dorcas Buckser
Pierre Burgers
Donald and Joan Burns
Elizabeth Cabot
Rachel Calabro
Emily Caldarelli
Siobhan Callahan
Gabriela Cantú
David and Martha Capaldi
Peter Carlson
Mike Cavanagh
Melissa Centofanti
Laila Flores Cervantes
Leslie Chazan
Renee Chicoine *
Senator Frank Ciccone
The Clark Household
Andrew Coburn
Zeke Cohen
Joanne and Charles Compton
Madison Condon
Zooey Conner
Kath Connolly
Rosie Connors
Patrick Cornbill
Michelle Cortes-Harkins and Rick Harkins
Katrina Cotton
Lynn Covington
Ian Cullings
Jessica Curtis
Kathleen Cushing
Francesca D'Andrea
Christopher Dalpe
Wayne Dalpe
Elizabeth Dalpe-Gilmore
Elizabeth Daniels *
Edward and Kathleen Davidson
Louise Davidson

Thomas de Angelus
Christine DeCesare
Corey deLisle
Jane Desforges and Mike White
Joanna Detz and Frank Carini
Margaret DeVos
Elizabeth Dear
Thomas E. Deller
Doris Mayleni De Los Santos
Jane Dickerman
Paul Dolan
Derek Donahue
Carol Dorros
Rebecca Dowling
Sharon Dragon
Carol Drowne
Joshua Duga
Elias Eberman
Leo Eberman
Lynn Edwards
John F. Emin
Michael Emma
Dennis and Johanne Erkan
Katherine Essington
Eric Essington
Kevin Essington *
Carol Evans
Kathryn Fairhead
Dr. Frank Faltus
Shirley Farley
Maura Fay
Wenley Ferguson and John Wolf
Nicholas Fernandes
Lucy Ferrari
Amy Ferreira
Barbara Fields
Gabrielle Fillion
Joseph Fink
Susan Flanagan
Eileen and Alan Fleischer
Jonathan Ford
Agnes Fox and Jillian Fox
James Frain
Bari Freeman *
Lindsay French
Zoe Fuad
Christian Fulghum
Meredith Fulghum
Adrienne Gagnon and Manuel
Cordero-Alvarado
Walter and Hollie Galloway

Ruth Gallucci
Evan Gamble
Rebecca Garfield
Diane Menio and Mark Garvin
Philip Gelatt
Roselyn and Murray Gereboff
Greg Gerritt
Sandra Gilardi
Katy Gilchrist *
Dylan Giles
Sally Godfrey
Bonnie Gold
Suzanne and David Goldenberg
Laura Gomez
Fredric Gorman
Andrea Goulet
Wendy Grossman
Edward Grouke
Arvind Grover
Melissa Guillet
Susan Gunter
Kathleen Hague
Steven Hamburg and Sarah Barker
George and Keri Hanley
Karen Hanley
Jason Harry
Jennifer Haugh
Barrett and Mary Hazeltine
Erin Heelan
Donna Heroux-Everson
Paul and Judith Hodge
Alex Hofstetter
Lucia Hsu
Representative Raymond Hull
Barbara Hunger and David Karoff
Cheryl Iannotti
Kevin Iannuccilli
Wendy Ingram
Isabelle Jaffe
Andrew Jencks
India Jencks
Kristen Jenkinson
Providence Johnson
Jennifer Jones
Rosa and Thomas Jones
Lori Joyce
Steven Kahan and Lori Kahan
Patricia Kammerer and Erich Stephens
Vince Keeney
Will Kelly
Dickon Kent

Meg Kerr and Bob Vanderslice
Daniel Kertzner
Rebecca Kessler
Sandra Killeen
Caroline Klivans and Pedro
Felzenzwalb
Brian Kortz
Gerald Krausse
James Kubiatawicz
Audrey Kupchan
Lauren LaBelle
Katherine Lacouture
Alexis Lamb and Celeste Caviness
Patricia Lang and Keith Enos
Louis Langer
Juliana Larsen
Katie Leclerc
Rochelle Lee
Timothy Lehnert
Alicia Lehrer and Jeff Walker
Suzanne Lehrer
Chapel Leinster
Evan Lemoine
Robin Leroux
Alden Leso
Rachel Levy
Richard Licht
Nancy E. Lloyd
Jeffrey Loureiro
Christopher Lourenco
Gianna Lourenco
Donna Lubrans
Diane Lusas
Althea Lyons
Jack and Megan Madden
David Madsen
Charles Mahoney
Kathleen Malin
Patrick Malone
Martha Manno
Steven Marcello *
Anthony Marciano
Hilary Markoe
Eugenia Marks
William Marrapese
Christopher Martin
William Martin
Robert Matthews and Jack Renshaw
Laura Maxfield

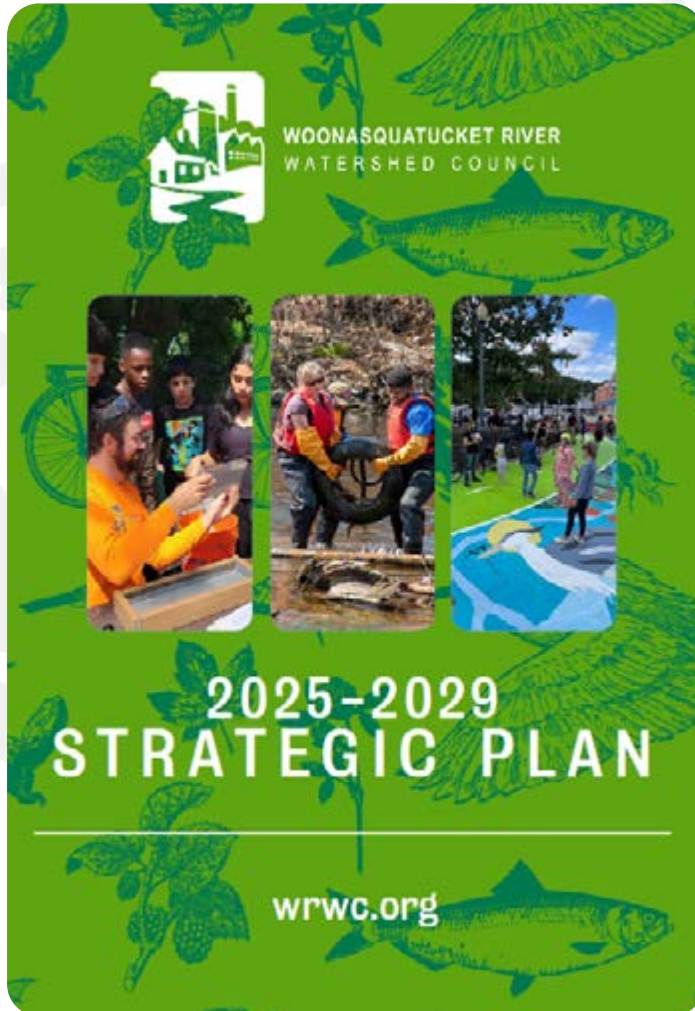
Michelle Maynard
Marisa Mazzotta
Karen McAninch and Steve Markovitz
Judith and Gerard McCabe
Jennifer McDowell
Catherine McElroy
Patrick McEvoy
Lori McGrath
Karen McKenna
Bob and Pam McMahon
Kelley McShane
Mizael Mendez
Joseph and Tiffany Mendez
Jenny Mercado
Laurie Mercier
Georganna Meyer
Samuel Meyer
Andrew Middleton
Rachel Miller
Cristina Mitchell and Roger Blumberg
Tim Mooney
Luis Morales
Patricia Moriarty
Amy Moses
Tom Mulvey
Cynthia Mulvey *
Kathy Murray
Daniel Musher
Kathleen and Soren Nasti
Andrew Neil
Chris Nelson
Allison Newsome
Melissa Northrup
Melanie Norton
Terry Novak
Marvin Novogrodski
Jessica Null
Simone Nunes-Duby
Gedas Paskauskas and Jane O'Hara
Joshua and Stephanie O'Neill
Karen OConnell
Donald Paiva
Reed Palmer
Kamakana Pankiwska
Camille and Bill Pare
William and Megan Pare
Alby Pearson
Linda Penaloza
Nerina Penzhorn
Mark Pereira and Daniel Schwartz
Steven Pereira
Ellen Phelan
Bryan Pilz
John Platt
Kimberly Platt
Shirin Platt

Denise Poliquin
Lisa Primiano
Jennifer Quinn
Melanie Racine
Michael Radz
Lydia Ratti
Jennifer Recinos
Heather Remollino
Barbara Rich
Corey Rodriguez
Cyndi Rodriguez-Lourenco
Kim Rohm
Jeff Rosenberg
Sharron Rothberg
Susan Round
Cindy Rourke
Christopher Royer
Shannon Rozea
Brianna and Kyle Russell
Jesse Rye
Judy Safian
Cedrik Samson
Nancy Santopadre
Mark Santow
Daphne Sarcia
Mark Sawtelle
Katherine Sayles
Elizabeth Schaefer *
Ira Schaeffer
Robert Scherzer
Barry Schiller
Nancy and Scott Schoen
Timothy Scholz
Jeffrey Schreck
Myra Schwartz
Tracy Schwartz
Brad Schwartz
Kathleen Sefcik
Kelly Seigh
Nancy Selchan
Michelle Sheehan
Emery Shelley
Pamela Sherrill
Paul and Renee Shield
William Sikov and Susan Sikov
Antonio Silva and Tacey Hellewell
Alexandra Silveira
Teresa Skinkle and Jean Hibbert
Curt Spalding
Jennifer Sparks
Sondra Spencer
Stephen Spilewski
Amy Stack
Daniella Stark
Elaine Steele
Leslie Stern-Charis and Philip Charis

Jennifer Stevens
Peter Stewart
Jennifer Stout
Julie Strandberg
Rich Streitfeld
Kris and Everett Stuart
Mark Swerdlik
Lennin Tabora
Julie Talbutt
Kurt Teichert
Grant Thomas
Emily Timm
Helen Tjader
Tina J. Toomey
Jeanne Tracey-McAreavey
Elder Trejo González
Adam Tucker
Jessica Turcios
Sally Turner
Bruce and Hazel Underhill
Darlene Vargulish
Rosalynde Vas Dias
Michael and Margaret Vigorito
Wendy Wagner
Johanna Walczak and Daniel Schleifer
Jennifer Walker *
Alisson Walsh and Adam Braver
Nina Wang
Leni Warlick
Bettie Weber
Gwen Weissinger
Gwen Weissinger
Hannah and Tyler Wells
Nicole Wells
Rosanna and James Wertheimer
Iris Westcott
Ian Westcott *
Gillian Kiley and Sam White
Liam Whitney
Suzy Williams
Violet Windham
Dorothy Windham
Anne and Ryder Windham
Corey and Sarah Windham
Yvonne Wingard
Nancy Winokoor
Maxine Wolfson and Paul Hossfield
James and Kim Worrell
Mary and Richard Worrell
Melissa Sherman and William Young
Sharon Zarzycki
Paul Zobel

**WE OFFER SINCERE APOLOGIES
FOR ANY ERRORS OR OMISSIONS.
PLEASE CONTACT OUR
DIRECTOR OF DEVELOPMENT &
COMMUNICATIONS
JDAVIDSON@WRWC.ORG WITH
CORRECTIONS.**

2025-2029 STRATEGIC PLAN



In 2024, we gathered a wide range of stakeholders to envision a five-year path for the Woonasquatucket River Watershed Council. Through inspiration, iteration, and innovation, we identified three goals that define our work through 2029 and beyond. When we achieve these goals, we will ensure a resilient, healthy, and sustainable future for the Woonasquatucket River and its communities. We are building on decades of success to achieve goals that guide our efforts within the river's communities, watershed and Greenway.

COMMUNITY

By 2030, lift up 8,000 residents to be environment, justice, and climate role models in their communities.

WATERSHED

By 2040, make all of the Woonasquatucket River clean, fishable, and swimmable, and minimize flooding disasters.

GREENWAY

By 2040, ensure 80,000 people are within a 10-minute walk of a safe, welcoming, and activated multi-use trail and natural area connecting North Smithfield and Providence.



For more about the 2024-2029 Woonasquatucket River Watershed Council Strategic Plan and the ways you can get involved, visit tinyurl.com/wrrwcstrat25

SUPPORT THE WRWC

donate



We are so grateful for all of the donors, partners, and funders in this report, along with the many volunteers whose time and effort make the Woonasquatucket River Greenway a gorgeous and welcoming public space. With your generosity, we will be able to keep the Woonasquatucket River and Greenway safe, clean, resilient, and joyful for many years to come.

FEELING INSPIRED TO JOIN "TEAM WOONASQUATUCKET" RIGHT NOW? YOU CAN DONATE ONLINE AT [WRWC.ORG/DONATE](https://www.wrwc.org/donate)

monthly support

We encourage online donors to spread their generosity throughout the year by donating monthly. Monthly donors become part of the Returning River Herring Society, receive a special gift of recognition each December, and make a real difference every single month. To donate monthly, visit [wrwc.org/donate](https://www.wrwc.org/donate) and choose monthly for your giving frequency.

dedicate a fish

Make a lasting impression on the Woonasquatucket river by dedicating a beautiful stainless steel fish. Your personalized River Herring will be a symbol of your commitment to clean water, thriving green spaces, and a sustainable future. Your fish can honor a loved one, celebrate a cause, or share your passion for the environment, inspiring all who walk, cycle, and explore the river's scenic paths. Each fish is a unique piece of art that becomes part of a larger story—one that connects our community in the shared vision of a vibrant, healthy Woonasquatucket Greenway.



MORE WAYS TO GIVE

We welcome checks payable to “WRWC” and sent to: WRWC, 45 Eagle Street, Suite 202, Providence RI 02909

We welcome grants from Donor Advised Funds. You may need to identify us using the full name of the organization: Woonasquatucket River Watershed Council.

Donating appreciated stocks and securities is a powerful way for you to support the Woonasquatucket River Watershed Council and potentially realize significant tax benefits.

If you are 70.5 or older, consider a **tax-free Qualified Charitable Distribution (QCD)** gift from your IRA.

We invite you to join the Heritage River Society by making a provision for the WRWC in your estate plans to ensure our vision for the future. When you leave a bequest or name the WRWC as a beneficiary of your retirement plan or insurance policy, your commitment to a cleaner, greener Rhode Island will live on.

CORPORATE SUPPORT

We are so grateful to the dozens of corporations that share our values and contribute generously every year. Consider being part of this special group by helping us find funding for:

EVENT SPONSORSHIP

Becoming a sponsor of a WRWC event is a meaningful way to showcase your commitment to the environment and the communities we serve. As an event sponsor, your brand will be featured prominently in promotions, signage, and materials, connecting you with a diverse audience that shares your values. Whether it's celebrating sustainability on **Earth Day**, supporting our **Fish Fun(d) gala**, or promoting outdoor recreation through **Community Paddles**, your partnership helps make these impactful events possible. Join us in creating lasting change for our river, environment, and community!

GENERAL SUPPORT

We gratefully accept corporate donations, which we recognize and celebrate prominently here on our website and in our annual report. Your company's donation demonstrates commitment to environmental stewardship and community impact. As a valued partner, your contributions will inspire others to join us in creating a cleaner, greener, and more resilient Woonasquatucket River watershed.

BLAZE SIGNAGE

We invite you to become part of the journey with Blaze Signs, which serve as wayfinding markers, guiding visitors along the trail while showcasing your support for our vibrant, community-driven green spaces. We're eager to share details about how your organization can show its commitment to the Woonasquatucket River and Greenway with a **Blaze Sign**.

GRANTS

Does your **organization or family foundation** have a charitable giving program? We'd love to learn more about your corporate giving priorities and explore ways we can partner to create meaningful impact. Let's work together to align your philanthropic goals with initiatives that build a healthier, more sustainable future.

For more information about ways to give to the WRWC, please contact Director of Development and Communications Jill Davidson at jdavidson@wrwc.org or visit wrwc.org/ways-to-give. WRWC's EIN is 05-0519694.

GET INVOLVED

Thousands of people have made our work possible as volunteers, donors, and partners. And now, more than ever, we need you (and many people like you) to join us to build local leadership, restore the environment, and get people outside. Connect with us, and we will connect you to the critical work of revitalizing the Woonasquatucket River and Greenway.



donate

wrwc.org/donate



join our mailing list

wrwc.org/subscribe



attend an event

wrwc.org/events



volunteer

wrwc.org/volunteer



follow

wrwc.org/social



WOONASQUATUCKET RIVER
WATERSHED COUNCIL

\$55

The FISH FUND



THURSDAY | JUEVES
AUGUST 14 | 14 DE AGOSTO
5:30 PM - 8:00 PM
FARM FRESH RI

10 SIMS AVENUE #UNIT 103 PROVIDENCE, RI 02909

Dive into a wildly fun evening in support of the Woonasquatucket River Watershed Council! From a scenic pre-party bike tour to mouthwatering local eats by Harvest Kitchen and drinks by New Harvest Coffee & Spirits, this event is packed with joy. Hosted by the ever-energetic RI Rep. David Morales, the night features live music by the Moonbellies, DJ Thirsty, and the Extraordinary Rendition Band, plus a fabulous fauna-and-flora-themed costume contest, dazzling raffle prizes, and more. Come celebrate, sparkle, and support the WRWC!



**PURCHASE
YOUR TICKETS
TODAY!**
**+EARLY BIRD
SPECIAL**



