

INVEST IN THE WOONASQUATUCKET RIVER WATERSHED COUNCIL TO HELP ALL RHODE ISLANDERS DISCOVER THEIR BETTER NATURE.



The Woonasquacket River Watershed Council creates positive environmental, social and economic change by revitalizing the Woonasquacket River, its Greenway and its communities. We transform unsafe and abandoned post-industrial places into vibrant community assets beloved by people and wildlife.



**WOONASQUATUCKET RIVER
WATERSHED COUNCIL**

45 Eagle Street, Suite 202
Providence, RI 02909
401-861-9046
wrwc.org

WE STARTED WITH COMMUNITY

As the 20th century began, Providence's Olneyville neighborhood shone as a vibrant community and innovative industrial hub. But by the end of the century, Olneyville was Providence's poorest neighborhood. Industry had abandoned textile mills and other manufacturing sites, which fell into dangerous disrepair.

When our project began in the 1990s, our organization's founders developed strong relationships with community members. People living near the river shared the ways that day-to-day life was hard. Few residents owned cars. People lacked serviceable routes to walk and bike to school, work, and other places.

Crime was high. Families had no safe places to play and be outside.

Abandoned, polluted, and hidden by heaps of rubble, the Woonasquatucket River—the power source for these mills and many others upstream—flowed through the neighborhood. Though the river was there, it was a hidden asset. Collaborating with federal, state, and city governments, we harnessed additional private funding for multi-use trails to connect neighborhoods along the river. Green spaces and the river itself started to emerge, providing opportunities for the community to play, breathe, and find everyday joy.



PROVIDENCE'S RIVERSIDE PARK: BEFORE & AFTER



THE WOONASQUATUCKET RIVER GREENWAY TODAY

The Woonasquatucket River Greenway has become a lifeline for community members seeking fresh air, safe places for recreation, and connections with the natural world. To build the Greenway, we partnered with the federal government, the state of Rhode Island, foundations, corporations, community-based organizations, and individuals to invest more than \$30 million to create the Woonasquatucket River Greenway, currently 75+ acres of park spaces and seven miles of off-road multi-use transportation paths. Our efforts and partnerships have catalyzed more than \$800 million in economic development.



Thanks to those who believed in our vision and invested in our work, the development of the Woonasquatucket River Greenway has had a tremendous impact on riverfront residents and the entire state of Rhode Island—and we're just getting started.

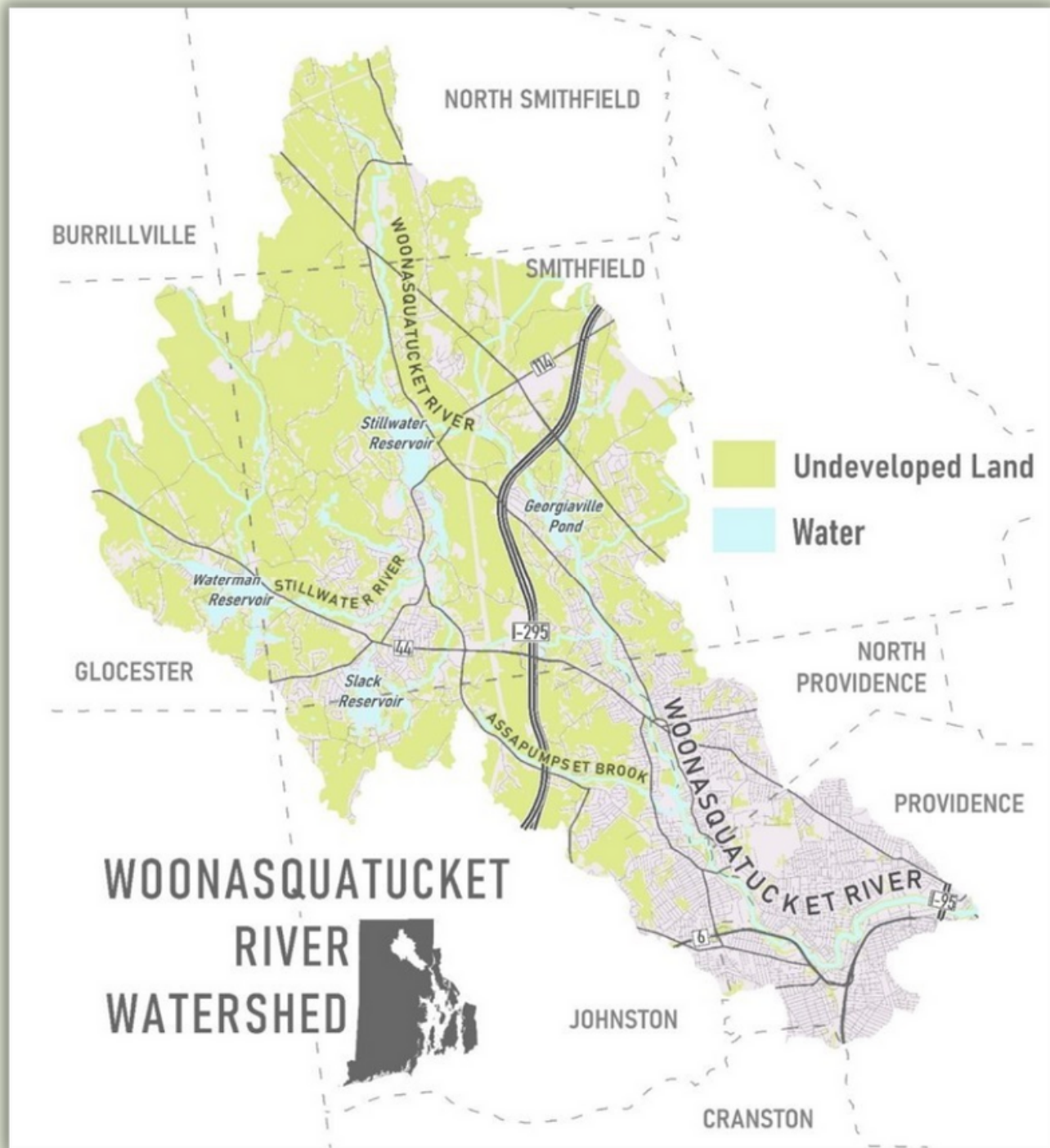
Join us to expand the Woonasquatucket River Greenway's multi-use transportation paths and our exciting programs throughout the watershed.



PART OF THE BLACKSTONE RIVER VALLEY NATIONAL HERITAGE CORRIDOR, THE WOONASQUATUCKET IS ONE OF ONLY 14 AMERICAN HERITAGE RIVERS.

WOONASQUATUCKET RIVER WATERSHED COUNCIL

WHAT IS THE WOONASQUATUCKET RIVER WATERSHED?



The Woonasquatucket River watershed is home to more than 25 percent of Rhode Islanders and thousands of wildlife species. The Woonasquatucket River starts in North Smithfield and Glocester, and then flows south through Smithfield, Johnston, North Providence, and Providence. At Waterplace Park in downtown Providence, the Woonasquatucket meets the Moshassuck River, forming the Providence River and joining upper Narragansett Bay and the Atlantic Ocean.

WOONASQUATUCKET RIVER WATERSHED COUNCIL

THE FUTURE THAT YOUR INVESTMENT WILL HELP CREATE



Clean water, open green spaces, and a more climate-resilient future make Rhode Island a vibrant and exciting place to live and work. With your help, we will continue to improve the Greenway, clean up the river, restore habitats, and build flood protection. We will continue to work hand-in-hand with community members most acutely affected by environmental injustice to create greener, cleaner, and safer places close to home.

We will expand the Woonasquatucket River Greenway to North Smithfield and connect to the Blackstone, Washington Secondary, and other regional trails. We will also continue to develop the existing Greenway and multi-use trail in Providence. These projects create additional safe transportation alternatives, healthy green spaces, and defenses against flooding, pollution, and excessive heat.

But most project funding does not pay for our time and expertise—both needed to coordinate complex initiatives.

And this funding does not pay to maintain and protect these investments. Previously dependable funding sources that supported our River Ranger team to improve the Greenway will soon expire. We must maintain existing investments and progress that has already been made. For that, we turn to you.

Your contributions ensure that the Woonasquatucket River Greenway remains a vital resource for everyone and everything within the Watershed and beyond. We are grateful for each and every contribution, and we work hard to ensure that your dollars make a real difference.



OUR SMALL STAFF IS SMART
WITH FUNDING, STRETCHING
EVERY DOLLAR
TO MAXIMIZE IMPACT.



WOONASQUATUCKET RIVER WATERSHED COUNCIL

OUR PROJECTS



RESTORING HABITATS

Because we dismantled obsolete dams and built fish passages, 40,000 river herring can now return from the Atlantic up the Woonasquatucket River to their natural freshwater spawning habitats. We have converted abandoned industrial sites to pollinator meadows. Nature has responded with gratitude. The return of insects, aquatic life, reptiles, mammals and birds makes the Woonasquatucket River Greenway an extraordinary urban wildlife oasis. And human beings living and working in the Woonasquatucket River Watershed are safer, happier, and healthier, too.

DISCOVERING ART ON THE GREENWAY

The local arts community has helped transform the Greenway with more than 35 murals, sculptures, and other visual art installations. This creativity connects us to nature through art and makes our Greenway a showcase for local artists. Youth living around the river often join local artists in installing these works and they take pride in making their neighborhoods more beautiful.

USING NATURE TO COMBAT CLIMATE CHANGE

We use trees, plants, soil, and other natural materials to clean and store stormwater. This reduces flooding, cools the climate, and creates habitats for people and wildlife. Our skilled River Rangers create landscapes and systems along the Greenway that ensure that dirty stormwater stays out of the river, minimizing pollution and protecting vulnerable communities from flooding. These projects absorb and clean more than 80,000 gallons of stormwater during every rainy storm. The green space that results provides shade, improved air quality, and other physical and mental health benefits to communities that need them most urgently.

PRIORITIZING ENVIRONMENTAL JUSTICE

Our New Voices/Nuevas Voces initiative goes deep into our commitment to partner with the riverfront residents to make change. Based in Providence's flood-threatened Olneyville neighborhood, the New Voices/Nuevas Voces program brings together residents from the Olneyville neighborhood in Providence for an eight-month learning program that amplifies community voices. New Voices/Nuevas Voces participants build skills and connections to increase their impact as leaders, activists, and stewards in the face of climate change.

EDUCATING YOUNG ENVIRONMENTALISTS

With your support, our environmental education team is creating the next generation of environmental stewards and champions. WRWC's educators provide science-based outdoor learning more than 800 students annually throughout the watershed. We engage elementary, middle, and high school students in programs that build strong scientific understanding and a proud sense of ownership through hands-on teaching and learning.

PUTTING KIDS ON BIKES

Our Red Shed Bike Program, based in Providence's Riverside Park, offers young people access to bicycles. We run bike camps for neighborhood kids, helping hundreds of young people increase their freedom on two wheels. We also collaborate with the Rhode Island Department of Transportation to offer a school-based program that teaches bike riding and safety skills to thousands of elementary school students statewide. And every year, we donate hundreds of bicycles and helmets to young people in riverfront communities.

ENGAGING COMMUNITY VOLUNTEERS

The attention of hundreds of Clean Day volunteers each year helps the Greenway to thrive. Teams from local businesses, schools, and community organizations volunteer during our Clean Days on the Greenway. Clean Days are terrific team-builders and great ways to give back to the community. Many individuals and families also join us in communities up and down the river to clean and beautify the Greenway.

EXPLORING AND ENJOYING THE WATERSHED

We love bringing people to the Woonasquatucket River and Greenway—assets that provide accessible joy for all. Thanks to your generosity, we offer a robust recreation program featuring hikes, kayak and canoe paddles, bike rides, a weekly walking club and more. Visit wrwc.org/events year-round to find ways to discover your better nature on the Woonasquatucket River Greenway!

HOW YOU CAN HELP

The Woonasquatucket River Watershed Council's work revitalizes our environment, our economy, and our communities. We rely on your support—and there is so much more to do. We suggest the following levels for meaningful partnership. We deeply appreciate multi-year investment, and we are open to customizing opportunities that work best for you.

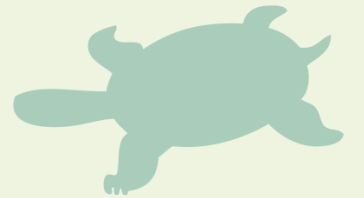
GREAT BLUE HERON SOCIETY | \$20,000+ ANNUALLY

- Photo op on Woonasquatucket Greenway
- Name/logo placement on banners/signs and promotional emails
- Name placement on twice-yearly newsletter and WRWC website
- Personal tour of the Woonasquatucket Greenway
- Invitation to WRWC partner updates and conversations



PAINTED TURTLE SOCIETY | \$10,000-\$19,999 ANNUALLY

- Name/logo placement on banners/signs and promotional emails
- Name placement on twice-yearly newsletter and WRWC website
- Personal tour of the Woonasquatucket Greenway
- Invitation to WRWC partner updates and conversations



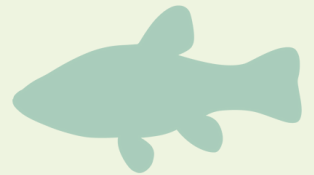
RIVER OTTER SOCIETY | \$5,000-\$9,999 ANNUALLY

- Name/logo placement on banners/signs and promotional emails
- Name placement on twice-yearly newsletter and WRWC website
- Invitation to WRWC partner updates and conversations



BLUEGILL SOCIETY | \$1,000-\$4,999 ANNUALLY

- Name placement on WRWC website
- Invitation to WRWC partner updates and conversations



OTHER WAYS TO MAKE A DIFFERENCE

Put Your Name on the Greenway Naming opportunities on the Greenway include sponsorship of vital features such as fish ladders and the Red Shed Bike Shed in Riverside Park. Also available: naming opportunities at Greenway gateways to spotlight our investors' generosity.

Sponsor an Event We offer dozens of opportunities to sponsor Clean Days, educational celebrations, recreation events, and more. We are happy to customize these specific sponsorships to meet your budget and your desired impact.

For more information about investing in our work:

- Contact Development Director Jill Davidson at 401-345-2464 or jdavidson@wrwc.org
- Visit wrwc.org/donate



**WOONASQUATUCKET RIVER
WATERSHED COUNCIL**