



May 6, 2021

**BOARD**

**Laureen Ratti**  
President

**Steve Bautista**  
Vice-President

**David Birkins**  
Treasurer

**John Flaherty**  
Secretary

**Eric Army**

**Jennifer Lisi**

**Ashlie Norris**

**Jennifer Recinos**

**Christopher Riely**

**Tina Shepard**

**Zane Silva**

**Mari Anne Snow**

**Douglas Stephens**

**Bike Education Instructor  
Job Description**

**About the Red Shed**

The Red Shed is the home of Bike Education Programs at the Woonasquatucket River Watershed Council, a RI environmental nonprofit. We work with cyclists of all ages and skill levels, from first time riders, to those with years of experience. Red Shed programs give our students, neighbors, and fellow Rhode Islanders, the skills and information they need to be safe and confident cyclists so that they can enjoy nature close to home. The Red Shed is located at Riverside Park in Olneyville, right next to the Woonasquatucket River Greenway.

Our main programs are an eight-week summer camp for children ages 8-12, and an in-school bicycle safety program for 5th graders, Rhode to Bicycle Safety. We also partner with schools and community groups to offer after-school programs, adult bicycle education workshops and more.

**Position Description**

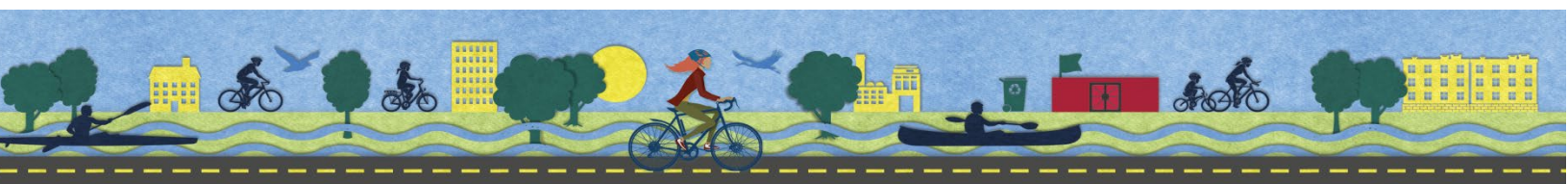
We are hiring a Bicycle Education Instructor to work with the Bicycle Program Director to deliver engaging bicycle education programs to current- and future- young cyclists. Bike Education Instructors lead bicycle education programs in schools, after-school settings, and at the Red Shed Bike Camp. In-school programs take place at various locations throughout Rhode Island. All programs include on- and off-bike instruction, with topics including rules of the road, bike handling skills, safety, basic bike maintenance, etc. This role is very physical in nature and requires abundant enthusiasm and high levels of energy.

**STAFF LEADERSHIP** This is a seasonal full time position starting mid-June and ending in mid-November.

**Alicia J. Lehrer**  
Executive Director

**Lisa Aurecchia**  
Director of Projects

**Jill Davidson**  
Development  
Director





## Who we're looking for

### BOARD

Laureen Ratti  
President

Steve Bautista  
Vice-President

David Birkins  
Treasurer

John Flaherty  
Secretary

Eric Army

Jennifer Lisi

Ashlie Norris

Jennifer Recinos

Christopher Riely

Tina Shepard

Zane Silva

Mari Anne Snow

Douglas Stephens

You might be just who we're looking for if you:

- Believe in the benefits of cycling to both individuals and communities
- Are a confident and enthusiastic cyclist
- Have some experience leading hands-on education programs and enjoy working with kids

## Responsibilities

- Become completely familiar with the Bike Education curricula, equipment and materials, and methods for effective course delivery; <sup>[L]</sup><sub>[SEP]</sub>
- Setting up and delivering courses in a professional, reliable, enthusiastic and fun manner; <sup>[L]</sup><sub>[SEP]</sub>
- Loading and unloading program equipment such as bikes, helmets, and other course gear; <sup>[L]</sup><sub>[SEP]</sub>
- Positively engage and motivate students during on-bike and off-bike instruction sessions (in both large and small groups); <sup>[L]</sup><sub>[SEP]</sub>
- Support Bicycle Program Director in administering evaluative processes with students and school staff, such as pre and post course surveys; <sup>[L]</sup><sub>[SEP]</sub>
- Communicate consistently and promptly with Bicycle Program Director regarding scheduling, <sup>[L]</sup><sub>[SEP]</sub>course feedback, and any incidents that occur while on-site; <sup>[L]</sup><sub>[SEP]</sub>
- Follow all safety procedures. <sup>[L]</sup><sub>[SEP]</sub>

## Required Qualifications

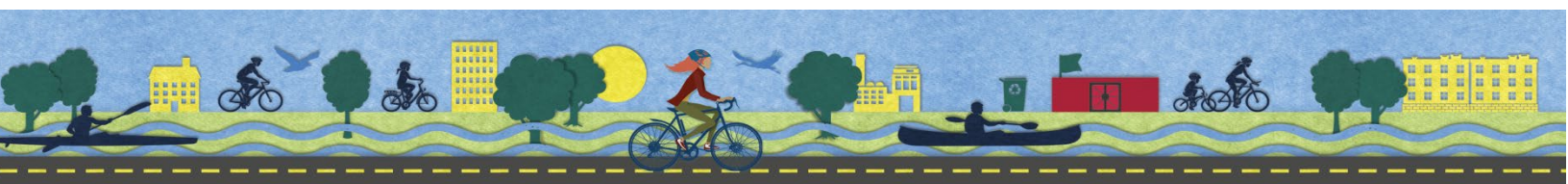
- Experience working with youth in an educational setting <sup>[L]</sup><sub>[SEP]</sub>
- Flexibility, interpersonal skills, and enthusiasm appropriate to the nature of this position <sup>[L]</sup><sub>[SEP]</sub>
- Knowledge of safe cycling practices
- Strong cycling skills (i.e. comfortable riding in groups and on the road)
- Knowledge of, or ability to learn, basic bike maintenance skills (ABC Quick Check) <sup>[L]</sup><sub>[SEP]</sub>
- Experience maintaining positive and professional interactions with broad groups of people
- Clear criminal record check (Rhode Island BCI)

### STAFF LEADERSHIP

Alicia J. Lehrer  
Executive Director

Lisa Aurecchia  
Director of Projects

Jill Davidson  
Development  
Director





# WOONASQUATUCKET RIVER WATERSHED COUNCIL

45 Eagle Street, Suite 202 • Providence RI 02909  
(401) 861-9046 • FAX (401) 861-9038  
www.wrwc.org

## BOARD

Laureen Ratti  
President

Steve Bautista  
Vice-President

David Birkins  
Treasurer

John Flaherty  
Secretary

Eric Army

Jennifer Lisi

Ashlie Norris

Jennifer Recinos

Christopher Riely

Tina Shepard

Zane Silva

Mari Anne Snow

Douglas Stephens

## Preferred Qualifications

- Driver's license and reliable transportation to schools throughout Rhode Island
- First Aid certification
- Bike Maintenance & Repair Skills
- Spanish Language Fluency

## Employment Terms & Timeline

Instructor hours and schedules will change throughout the season according to program needs.

In-School programs run late April through mid-June and September through October. Programs take place during the school day, generally between 8am and 3pm. Some early starts may be required for travel to program locations.

Red Shed Bike Camp runs for 7 weeks from July 6th to August 24th and is staffed from 8:30am to 3:30pm.

Ideal candidates have flexible weekday daytime availability and occasional weekend work availability. Instructors must be willing to travel throughout Rhode Island. On-site curriculum training will be provided.

Compensation: \$15.00/hr

## How to apply:

Please submit one PDF document that includes a cover letter and resume to [dgreen@wrwc.org](mailto:dgreen@wrwc.org) with "Bike Education Instructor Application" in the subject line.

## STAFF LEADERSHIP

Alicia J. Lehrer  
Executive Director

Lisa Aurecchia  
Director of Projects

Jill Davidson  
Development  
Director

