



WOONASQUATUCKET RIVER
WATERSHED COUNCIL

Greenway Neighbors Update
April 27, 2021 – 7 PM

*WRWC Mission: Create positive environmental, social
and economic change by revitalizing the
Woonasquatucket River, its Greenway and its
communities.*

1993

Jane Sherman — Scaling
the Rubble of Riverside
Mills

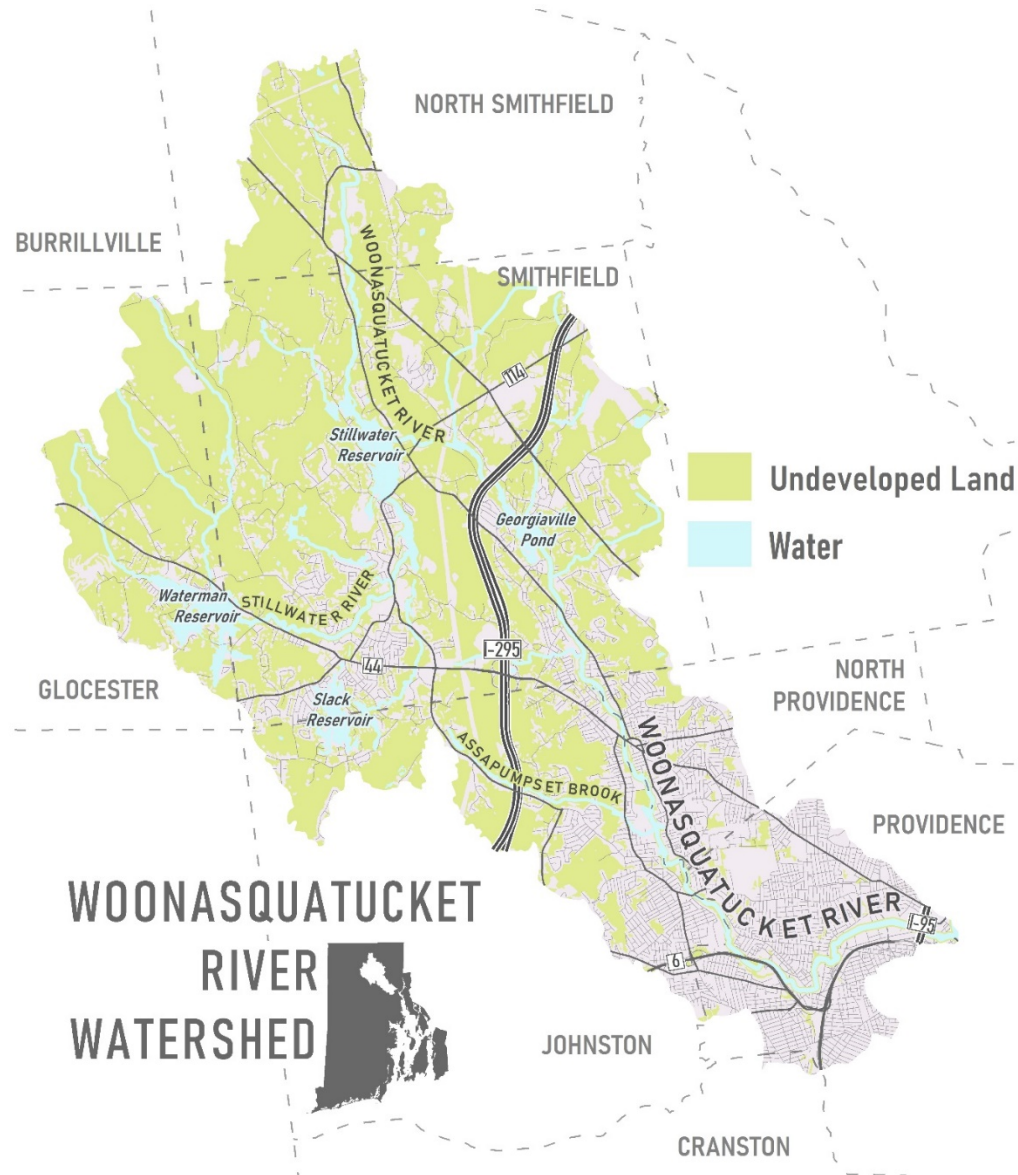






Communities Impacted by WRWC

**283,757 total
population
(27% of RI)**



The Woonasquatucket River Greenway



We've Come A Long Way



RIVERSIDE PARK 1993



TODAY

More Park Transformations

CRICKET FIELD



MERINO PARK



MANTON SKATEPARK



DONIGIAN PARK



WOONY ADVENTURE PARK

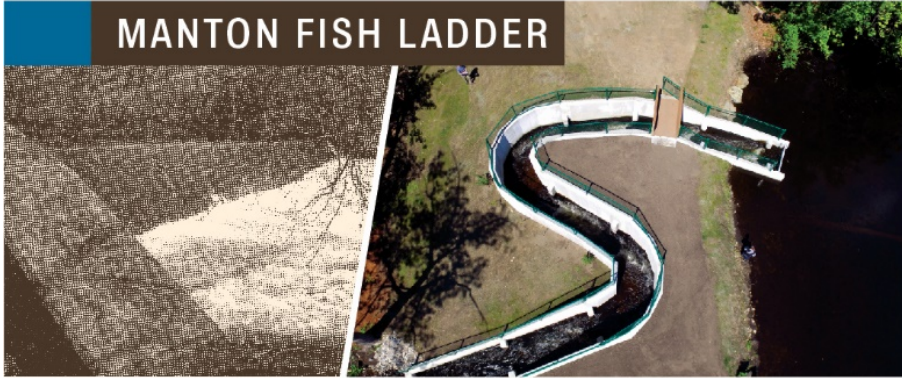


POCKET PARK



Fish Passages

MANTON FISH LADDER



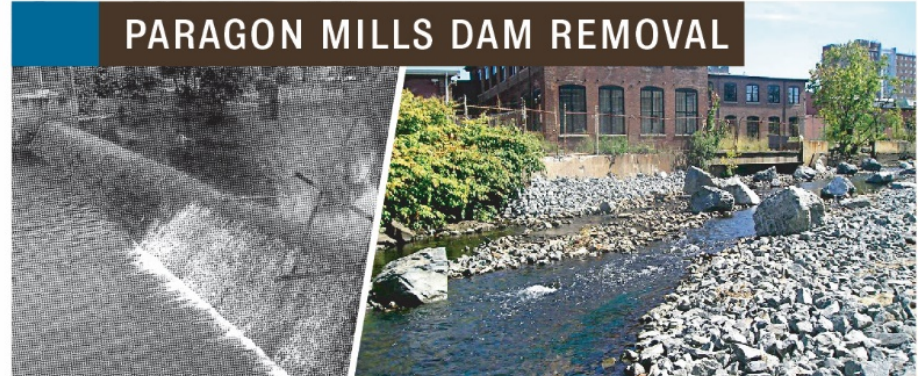
DYERVILLE DAM REMOVAL



RIVERSIDE FISH LADDER



PARAGON MILLS DAM REMOVAL



RISING SUN FISH LADDER



The Woonasquatucket River Greenway

Transforms State Assets

\$120 million leveraged by WRWC

Black Locust Pocket Park: \$80,000

Designs, materials and installation, and maintenance. Collaboration with community.
Savings of over \$400,000 based on private company estimates for installation alone.

Donigian Park: \$2.2 million

Bike path and bridge, playgrounds, canoe launch, solar lighting, banners, on-going illegal dumping cleanups. Inspired further investments of a futsal field, rain gardens and exercise equipment. No longer known as “Needle Park”.

Riverside Park: \$10.4 million

Brownfield remediation, bike path, playgrounds, community gardens, canoe launch, shade structures, picnic areas and benches, bike racks, Red Shed and Bike Camp, community stage, green infrastructure, plantings, on-going cleanups. Also now an EPA Brownfield Community Showcase.

Merino Park: \$605,000 & Sheridan Street Bridge: \$2 million

Bike path, playgrounds, cleanups & invasive removals, murals, Sheridan Street Bridge rebuild. Park reopened and now the epicenter of weekend soccer games for Providence.

Manton Gateway & Skate Park: \$586,000

Design, plaza construction, skate park, bike path spur

Fish passage through first 5 dams on river: \$2.1 million

Rising Sun Fish Ladder, Paragon Mills dam removal, Riverside Park Fish Ladder, Dyerville Dam removal, Manton Nature-like Fishway

Centerdale Superfund Site: \$100 million settlement

Community connection for cleanup of federal superfund site

Volunteers: \$100,000+ annually for over 20 years

Given in time and service transforming neighborhood assets.



The Woonasquatucket River Greenway Creates New Opportunities



Woonasquatucket Vision Plan & Promenade Kinsley Evolution:

Protected bike lanes using stormwater
treatment solutions.

Public art, boat launches, invasive plant
management.



Gotham Greens Bike Path Design Underway

Joins Woonasquatucket and Washington Secondary Greenways



The Woonasquatucket River Greenway Creates Economic Development

\$692.95 million Catalyzed by WRWC

Eagle Square Commons: \$36 million invested

50 residential condominiums
220,000 square feet of retail, office and art/studio

Monohasset Mills: \$10 million invested

39 live / work condominiums for artists and others

Rising Sun Mills: \$56 million invested

151 loft rental apartments
125,000 square feet of retail & office space

Jefferson at Providence Place: \$58 million

330 condominiums – in progress

The Foundry: \$36 million invested

200+ loft rental apartments

Riverside Gateway: \$11.4 million invested

Community-controlled investment
35 affordable rental housing units
20 affordable home ownership condo townhouses
2 commercial units

American Locomotive Works: \$333 million invested

600 residential units plus hotel, office, retail
26 buildings on 22-acre site

US Rubber Lofts: \$20 million invested

302 loft rental apartments

60 King: \$22 million invested

Mixed income rentals, affordable & market rate
54 units subsidized below market rate
6 units market rate

91 Hartford: \$10 million invested

102 loft rental apartments

Gotham Greens: \$12.2 million invested

110,000 square feet of greenhouse space
7.2 acre site activated after abandoned 20+ years

Armory Properties on Valley: \$88.35 million

United Way of RI, Calendar Mills, etc.

Paragon Mills: \$30 million

In progress

Programs & Amenities



**RIVER
RANGERS**



SCULPTURES



CANOE + KAYAK



CLEAN DAYS



GARDENS



Programs & Amenities



**GREEN
INFRASTRUCTURE**



SHADE + SEATING



**ENVIRONMENTAL
EDUCATION**

PLAYGROUNDS



Programs & Amenities

PLAYGROUNDS



MURALS



RED SHED BIKE SHOP + CAMP

The Woonasquatucket River Greenway Creates New Opportunities



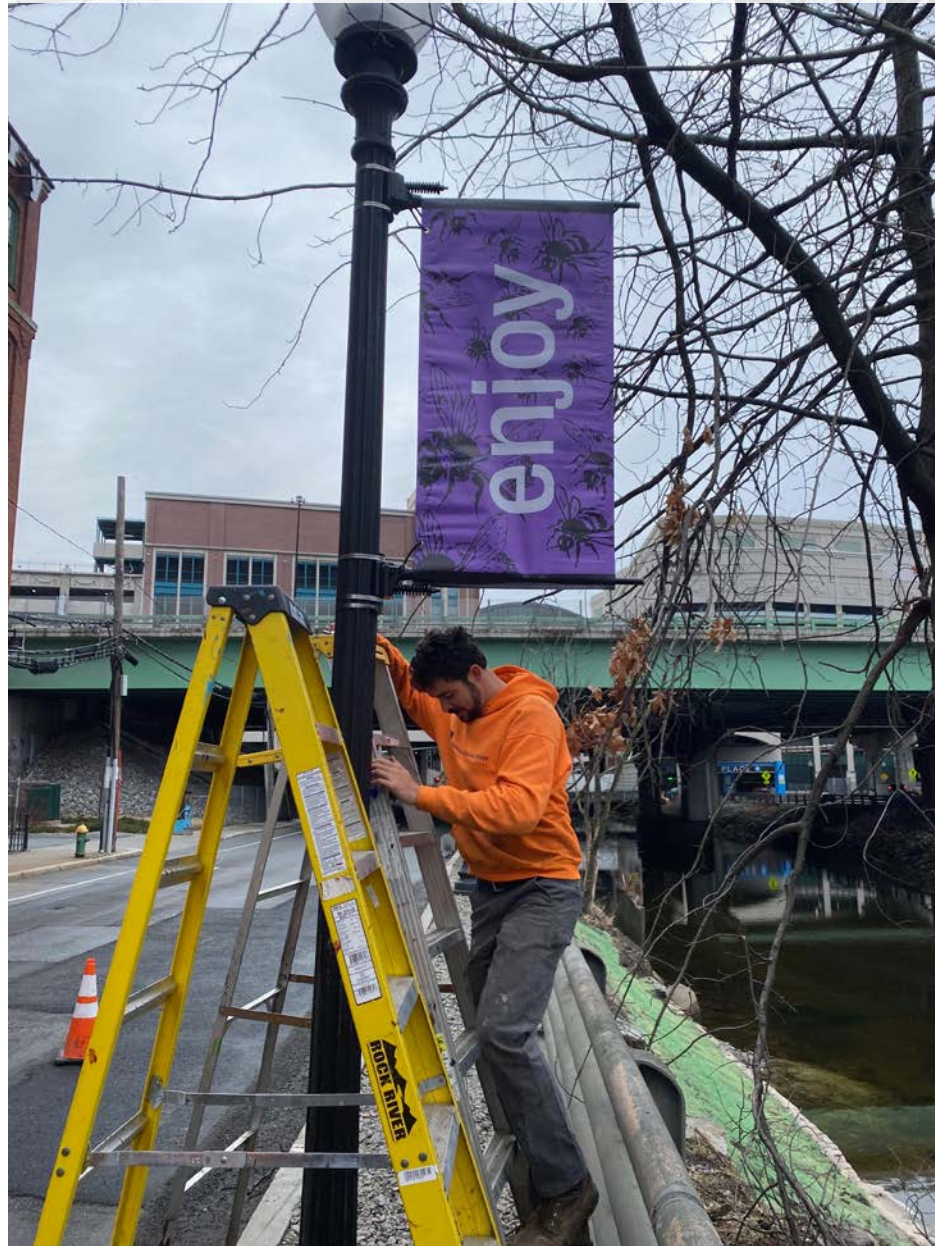
Greenway Branding & Signage:

New gateways, signs and graphics for wayfinding.

Already using graphics with mini-murals, banners, habitat signage.



Promenade Kinsley Banners/Flags



Construction Fencing Graphics



Gateway Signage – Eagle Square



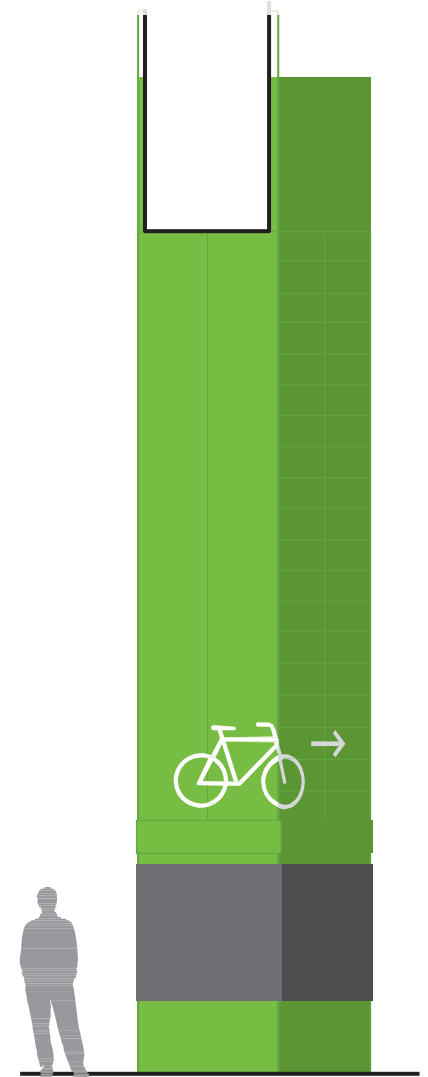
Gateway Signage – Providence Place



Mural & Greenway Markings – Providence Place



The Big Gateway Painted – Mall to Promenade



The background of the slide features a collage of autumn-themed images. At the top, there are trees with bright yellow and orange leaves against a clear blue sky. On the right side, a river flows through a wooded area with trees showing red and orange autumn foliage. At the bottom, a paved path with a yellow line runs alongside a river, with a person's legs and a bicycle wheel visible, suggesting a recreational activity like biking.

We envision...

A clean Woonasquatucket River and thriving Greenway for all to enjoy from North Smithfield to Narragansett Bay.

Our Goals

- Renew the river as swimmable and fishable
- Prepare neighbors for climate change and build community resilience
- Expand the Greenway - connect to state bike path network
- Transform, expand and care for Greenway parks and spaces
- Grow pollinator habitat & expand green infrastructure on the Greenway
- Restore the river to be a healthy spawning habitat
- Give youth job training & grow neighborhood stewardship
- Bring local students to the river to learn about the environment



Thanks for Joining Us



WOONASQUATUCKET RIVER
WATERSHED COUNCIL