



Bid Form for Gateway Signage Installation

The Woonasquatucket River Watershed Council requests a quote for installation of custom signage along the Woonasquatucket River Greenway Bike Path, including a minimum of 4 primary signs, 1 secondary sign, 4 map info signs, and 3 footings, with potential for more. Please submit bids for the following specifications to the address below in a dated and sealed envelope.

Gateway Signage Installation bid due Friday November 20, 2020 and will be read publically at 4:00 PM.

Submit to:

WRWC
45 Eagle Street Suite 202
Providence RI 02909

Company Name: _____

Contact: _____

Address: _____

Phone: _____

Email: _____

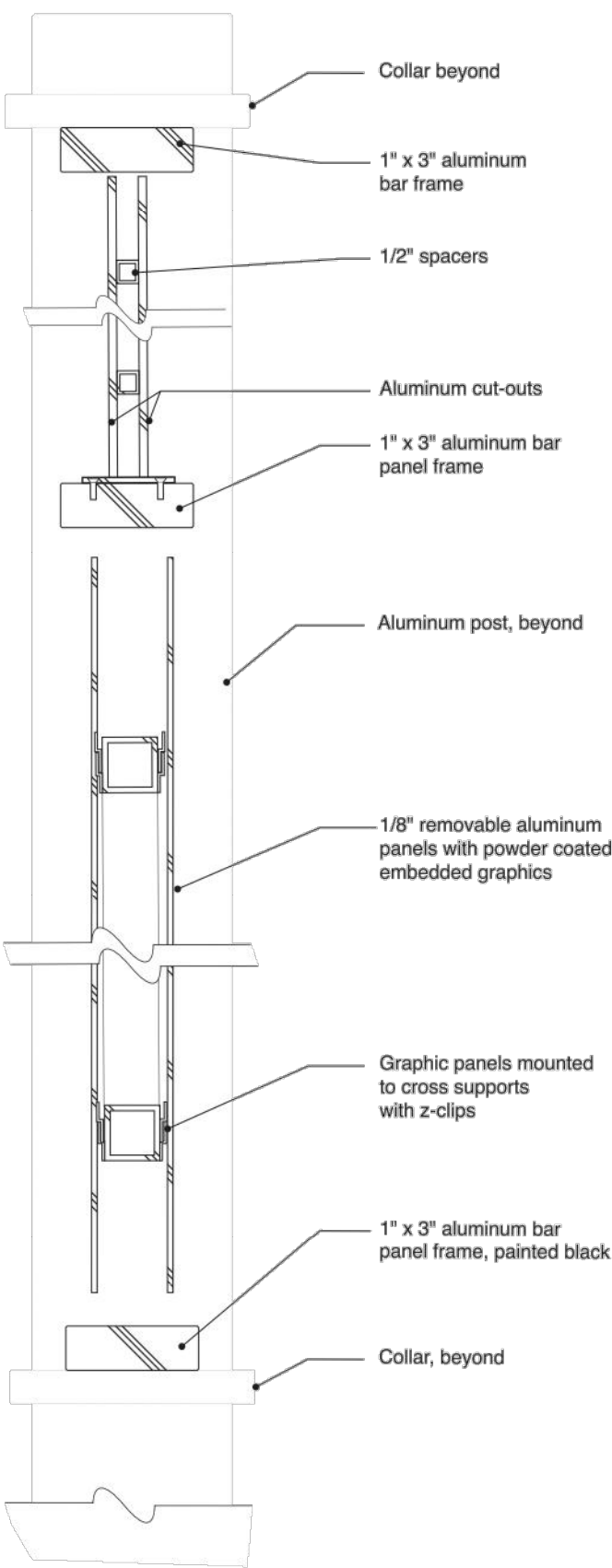
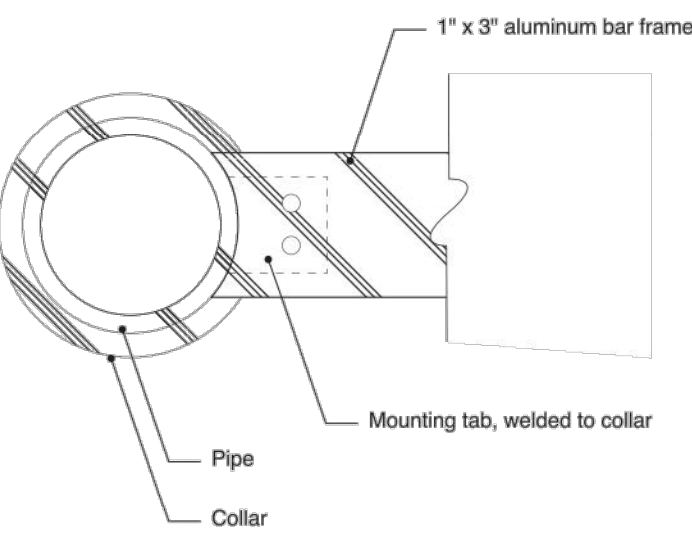
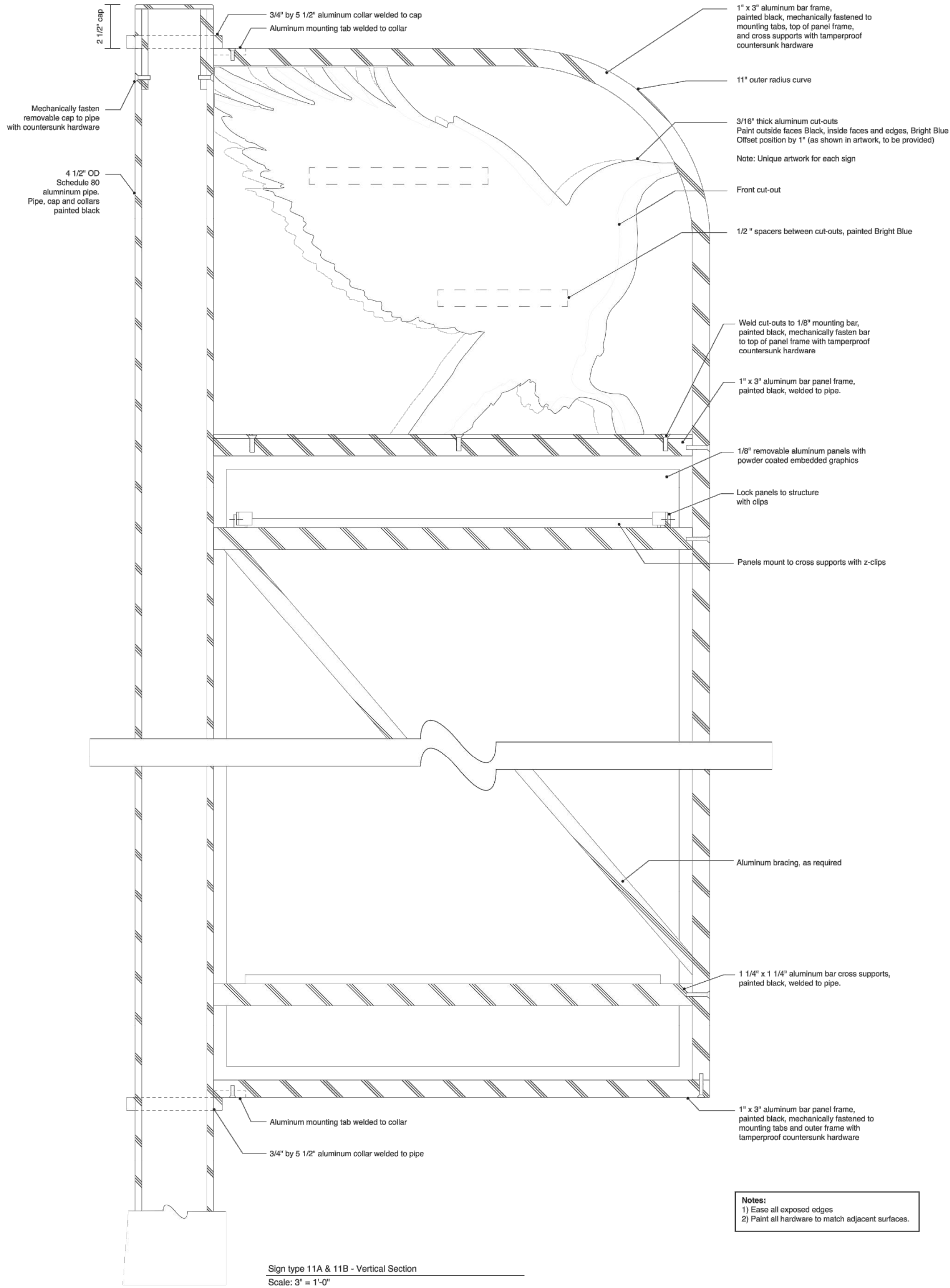
Specifications

- See attached signage documents w/ dimensions and specifications.
- Awardee shall carry the quoted price for up to 4 years.
- Installer shall provide all required materials, hardware, and storage (if necessary) for installation of signs and/or footings.
- WRWC shall provide coordination with fabricator for delivery of completed signs.



Bid Form for Gateway Signage Installation

	Per Unit Price
Primary Signs – Sign Type 11 (min. of 4) (price without footing)	
Secondary Signs – Sign Type 12 (min. of 1) (price without footing)	
Map Info Signs – Sign Type 13 (min. of 4) (price without footing)	
Signage Footings (min. of 3)	



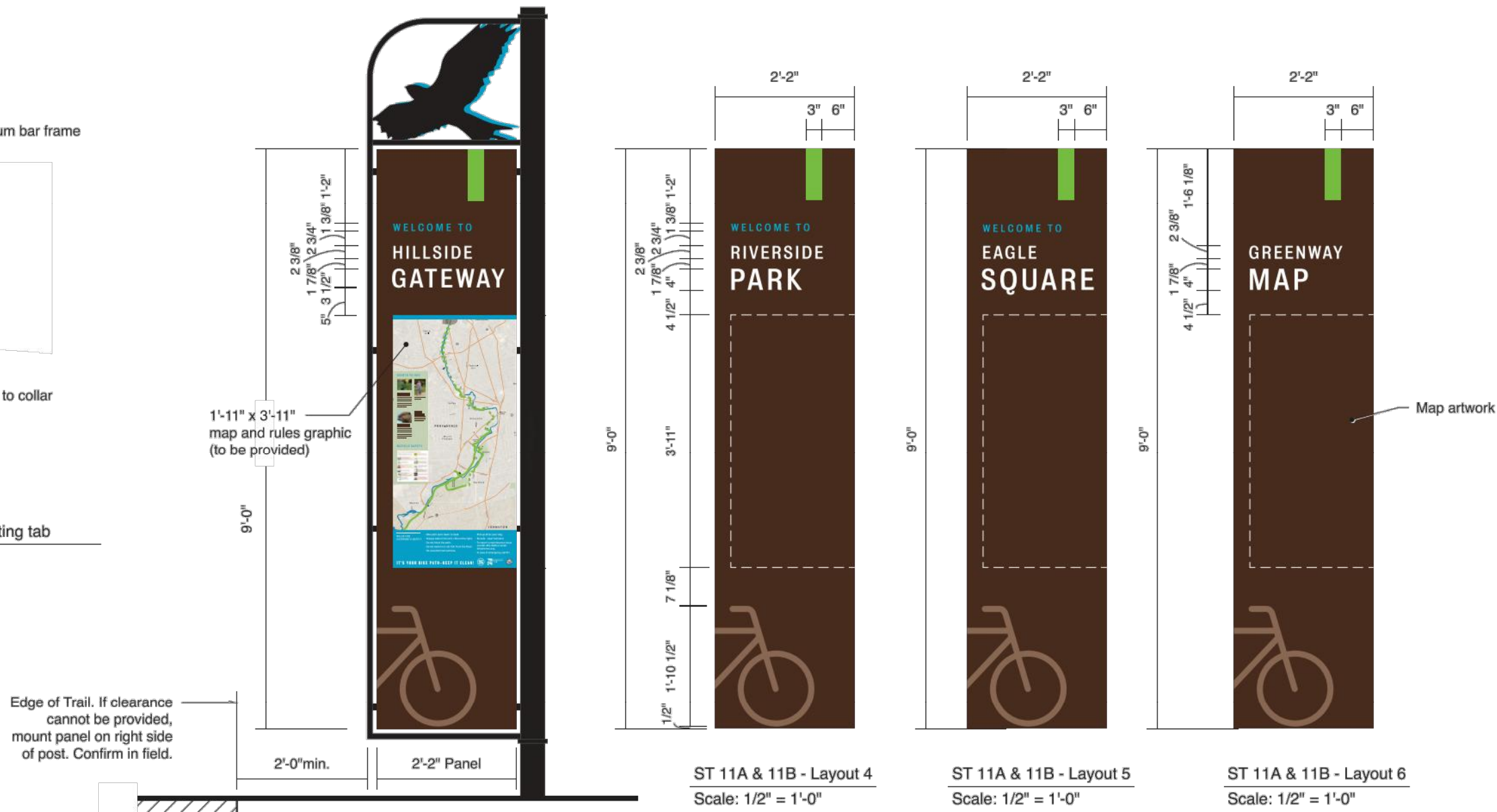
Sign Type 11A - Primary Gateway, Double
Sign Type 11B - Primary Gateway, Single

Description
Aluminum sign post with fabricated aluminum frame holding two removable back-to-back aluminum panels with embedded graphics. Two offset painted aluminum cut-outs installed in header of sign.

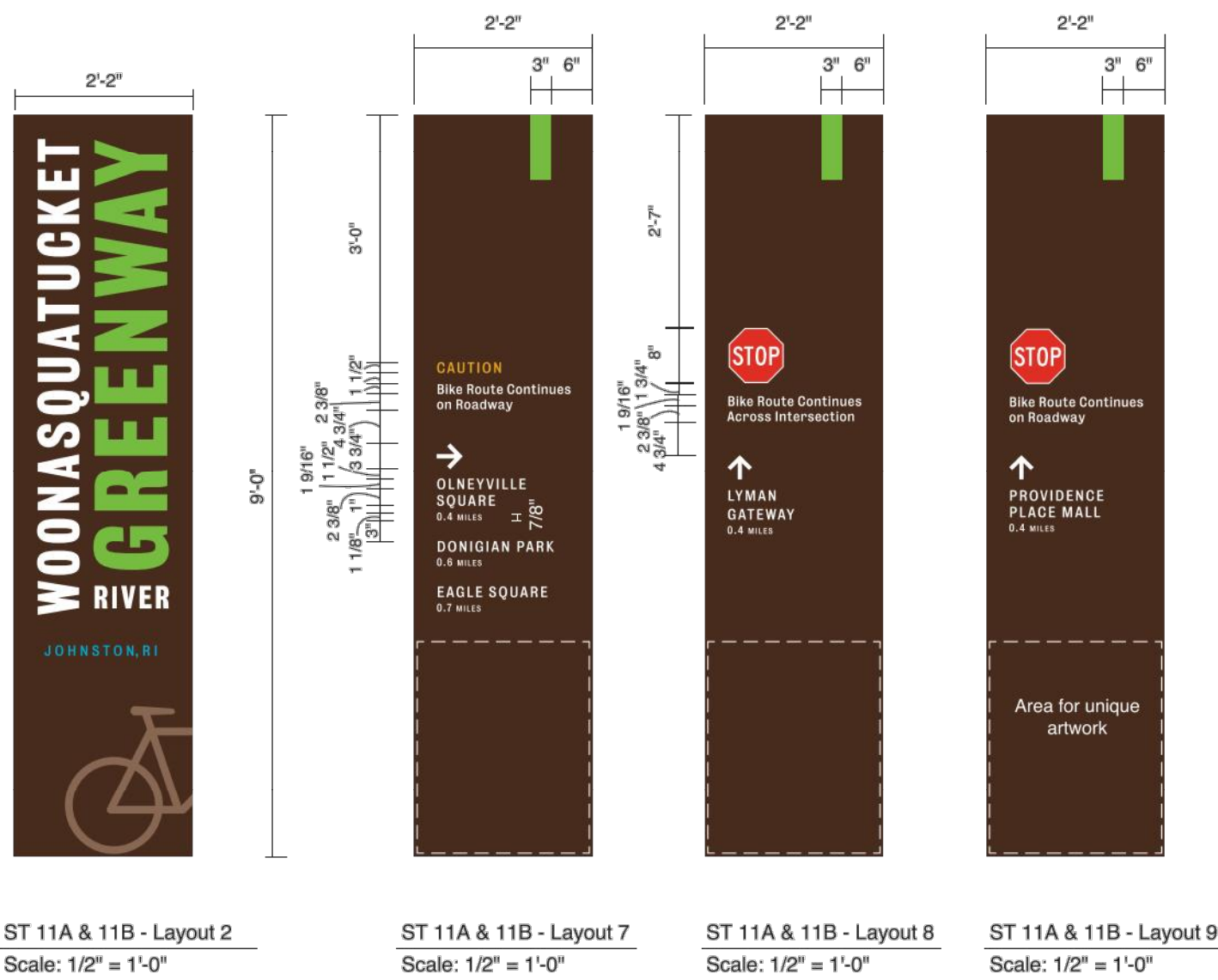
Typeface
Bureau Grotesque Five Three

Artwork
Provided in Adobe Illustrator CS7

Sign Colors
Black - frame, post and front faces of cut-outs, inside of graphic panels
Bright Blue - Inside faces and edges of cut-outs, spacers



SEE HIGHLIGHTED NOTES FOR FOOTING HEIGHT



Note: Layouts 1 & 2 shown for information only. Final layouts to be provided by designer.

Roll Barresi & Associates

48 Dunster Street
Cambridge, Massachusetts 02138
t. 617-868-5430



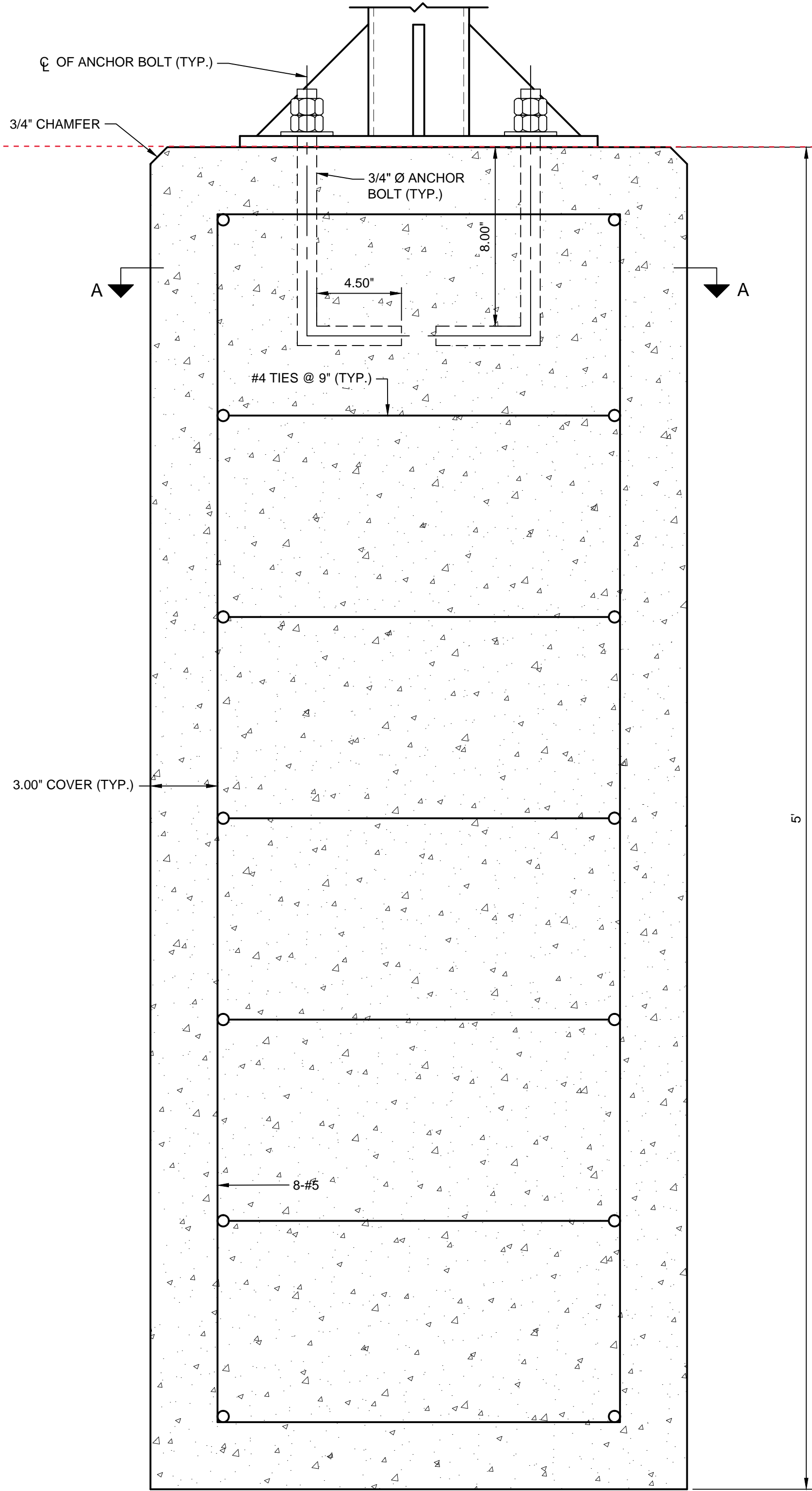
PARE CORPORATION
ENGINEERS • SCIENTISTS • PLANNERS
8 BLACKSTONE VALLEY PLACE
LINCOLN, RI 02865
401-334-1100

RHODE ISLAND
DEPARTMENT OF TRANSPORTATION

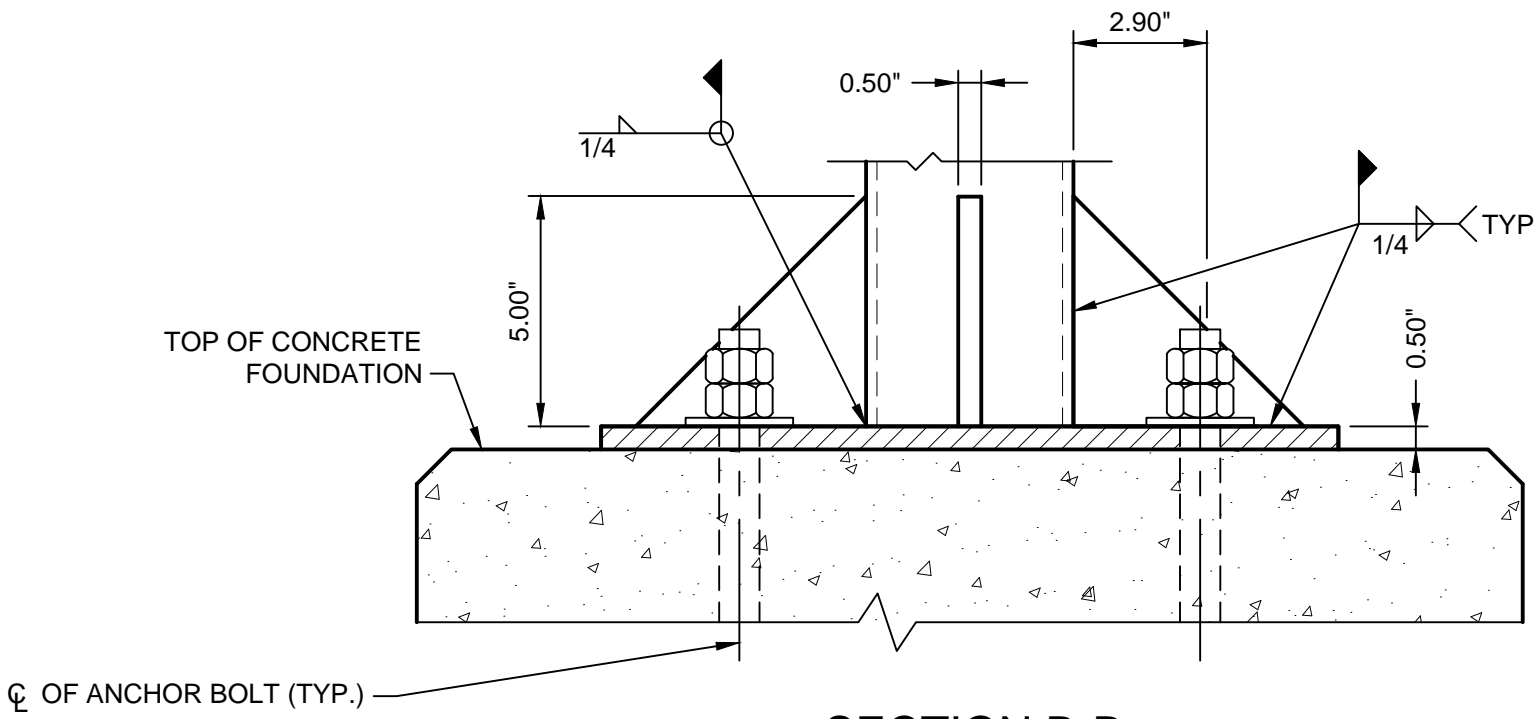
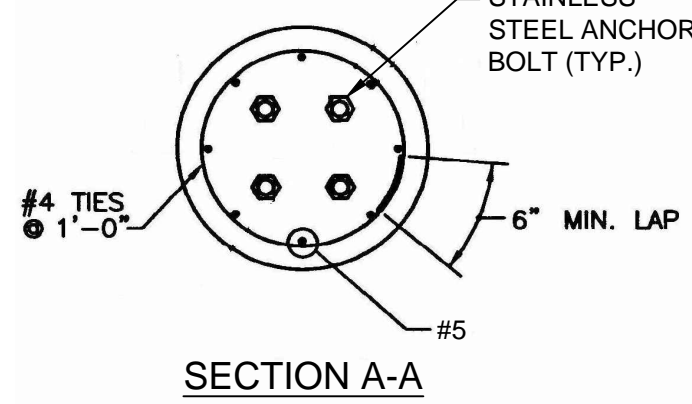
NORTHWEST BIKE TRAIL /
WOONASQUATUCKET RIVER GREENWAY
GATEWAY AND SIGNAGE PROGRAM
PROVIDENCE & JOHNSTON RHODE ISLAND

SIGN TYPES 11A, 11B
ELEVATION / LAYOUTS / SECTIONS

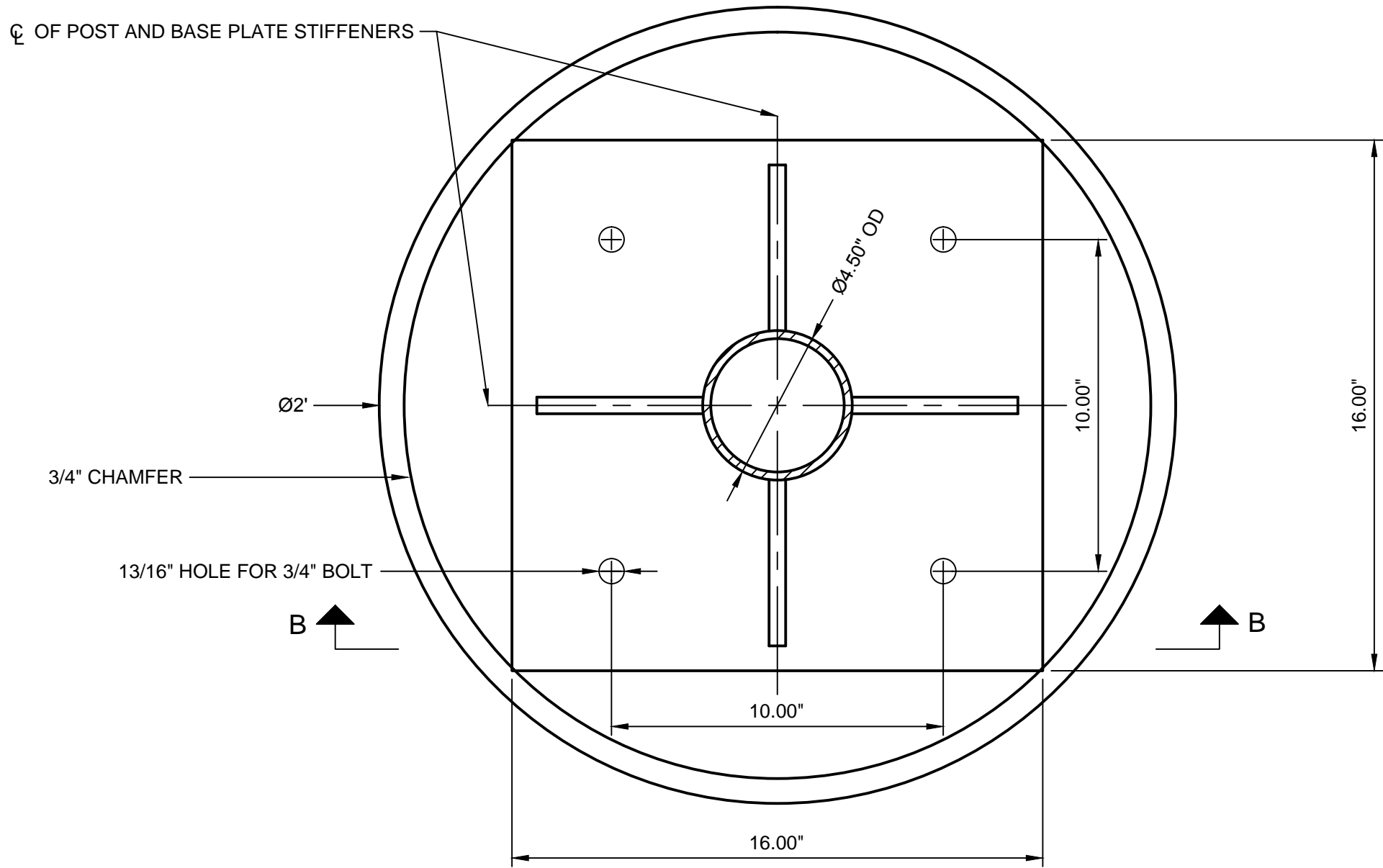
CHECKED BY _____ DATE _____ SCALE _____



SIGN FOUNDATION - SIGNS 11A, 11B, 12 & 13
NOT TO SCALE



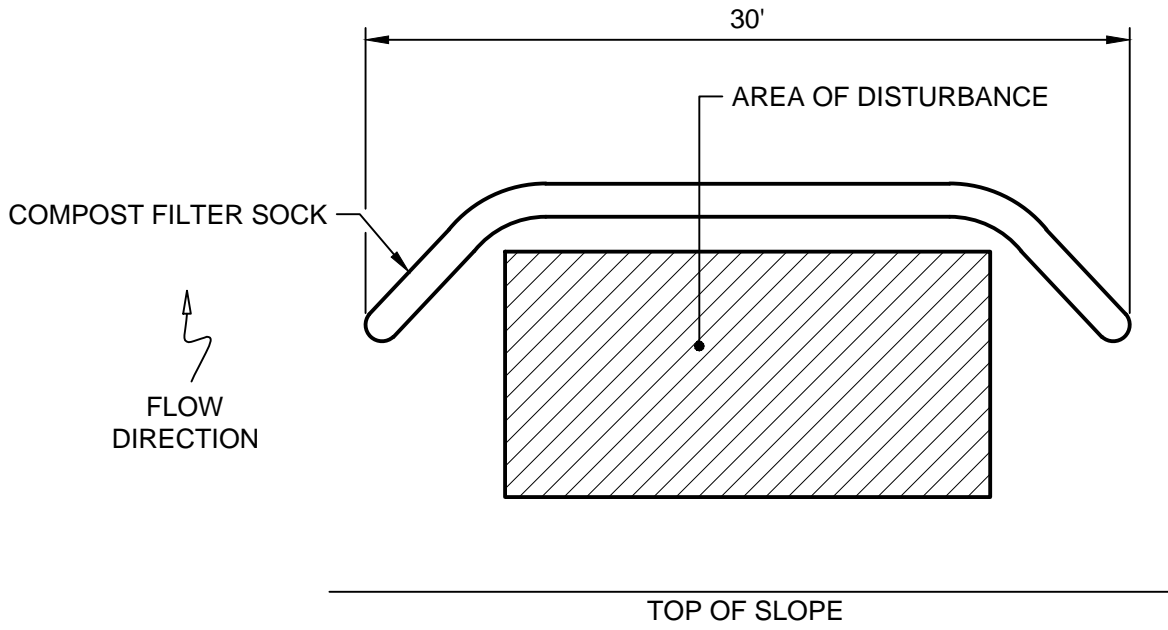
SECTION B-B
NOT TO SCALE



BASE PLATE - SIGNS 11A, 11B, 12, 13
NOT TO SCALE

BASE PLATE AND FOUNDATION NOTES:

- THE BASE PLATE AND STIFFENERS SHALL BE GRADE ASTM-B221 ALLOY 6061-T6 ALUMINUM. WELDS CONNECTING ALUMINUM COMPONENTS SHALL BE FILLER ALLOY 5536.
- ALL UNPAINTED ALUMINUM COMPONENTS BELOW GRADE AND/OR IN DIRECT CONTACT WITH CONCRETE SURFACES SHALL BE COATED WITH ALKALI RESISTANT BITUMINOUS PAINT OR OTHER COATING WITH EQUIVALENT PROTECTION.
- ANCHOR BOLTS SHALL BE STAINLESS STEEL ASTM GRADE A193 B8M CLASS 1 OR BETTER. NUTS SHALL BE ASTM GRADE A194 B8M CLASS 1 OR BETTER. ALL ANCHOR BOLTS, NUTS, AND WASHERS SHALL BE 316 STAINLESS STEEL.
- CONCRETE SHALL HAVE A MINIMUM 4000 PSI 28 DAY COMPRESSIVE STRENGTH. ALL STEEL REINFORCING SHALL BE AT A MINIMUM ASTM A615 GRADE 60.



TYPICAL EROSION CONTROL INSTALLATION - SIGNS 11A, 11B, 12 & 13
NOT TO SCALE

SEE HIGHLIGHTED NOTES
FOR FOOTING HEIGHT

REVISIONS		
NO.	DATE	BY

RHODE ISLAND
DEPARTMENT OF TRANSPORTATION

NORTHWEST BIKE TRAIL /
WOONASQUATUCKET RIVER GREENWAY
GATEWAY AND SIGNAGE PROGRAM

PROVIDENCE & JOHNSTON, RHODE ISLAND

DETAILS

CHECKED BY _____ DATE _____ SCALE _____

File: T:\14120.00 WRC Greenway Signage Program
Sheeting for invalid reference

PARE CORPORATION
ENGINEERS • SCIENTISTS • PLANNERS
8 BLACKSTONE VALLEY PLACE
LINCOLN, RI 02865
401-334-1189

00000_V1_036_DETAILS012