



Thanks to You, the Greenway is Clean!

With your support, folks all around the Woonasquatucket River Watershed have been outside enjoying nature and fresh air, which are more essential than ever. Our River Rangers are installing and maintaining critical Green Infrastructure features that build climate resilience. They keep the paths safe, remove river trash, and lead collaborative clean up days with partners like ONE Neighborhood Builders. With face coverings and safe social distance, Eric, Alex, Arrianna, Jake, and Sara keep the Greenway clean and safe for everyone in the Watershed. **Your generosity keeps the River Rangers afloat and our 75 acres of Greenway ready and resilient!**



Your Donation Supports In-Person and Distance Education and Exploration

Thanks to you, 700+ young people enjoyed our K-12 Education programs during this past school year and summer! We started the year with some amazing in-person learning, and in March we pivoted to virtual environmental exploration. Check our online learning resources at www.wrwc.org/resources. Whatever the coming school year may bring, we're ready and excited to bring the Woony to life in classrooms, on the Greenway, and through virtual learning.



We thank our education program funders and partners, including the United States Environmental Protection Agency, the Nordson Corporation Foundation, the Metropolitan Career and Technical Center, Providence After School Alliance, Kids Klub, the Rhode Island Foundation, the United Way Olneyville Fund, William D'Abate Elementary School, and Paul Cuffee Elementary School.



Learning in action! Education Program Director Sara Canuel and Environmental Educator Alicia Contelmo read to us about trees, and a young River Adventurer meets a salamander.

www.wrwc.org | 45 Eagle Street, Suite 202, Providence, RI 02909

You Have Made 2020 An Amazing Year for Climate Resilience

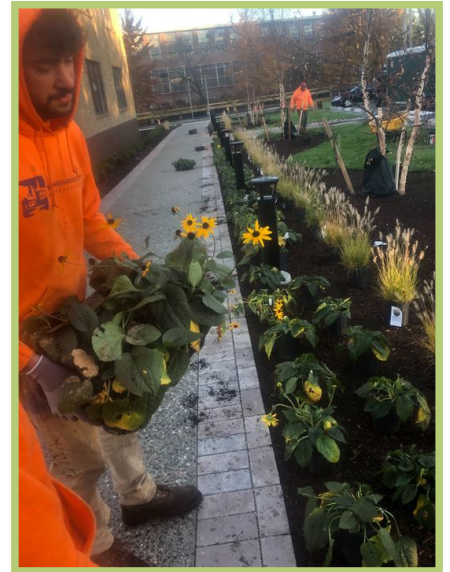
Thanks to your support, resilience work has taken off! We are Greening the Greenway by reducing pavement and adding plants and soils that clean and store stormwater while reducing flooding, cooling the climate, and creating habitats for people and wildlife. You have made WRWC a leader in stormwater education and demonstration projects for nearly two decades.

During 2019 and 2020, some amazing projects are complete or in the works:

- Pleasant Valley Parkway “stream-friendly” homes state pilot project
- An Olneyville Square parking lot transformed into a walking/hiking connector and stormwater treatment system
- San Souci protected bikeway
- Manton Avenue and Pleasant Valley Parkway tree filters
- Parking lot retrofits at the Door of the Refuge Church, Cathedral Art Metal, and the new Farm Fresh Food Hub
- Upstream, instillation of a permeable parking lot at the Greystone Social Club in North Providence

There is more! We are thrilled to bring together six Watershed cities and towns to complete a Watershed-wide flood resiliency study funded by the Natural Resource Conservation Service Watershed

Protection and Flood Prevention Act (PL-566). We start this work in October 2020. The plans that emerge could lead to tens of millions of dollars in climate resilience investment in the Woonasquatucket Watershed. We could not do any of this without your investment in us.



Your Donation is Transforming the Greenway Connection to Downtown

Thanks to you, our staff is collaborating with the City of Providence and the Rhode Island Department of Transportation to build a game-changing Greenway connection.



From Eagle Square to Providence Place, the separated biking/walking trail will include green stormwater control features and placemaking elements like canoe launches, pocket parks, and art installations.

Construction will begin in 2021 and will completely transform this section of the Greenway through Olneyville and Downtown Providence.

Check out the new banners under the Route 95 viaduct by the Providence Place Mall-- just a glimpse of what is to come!

Follow us for the latest news and updates!



@WRWCRI on Facebook



@thewoony on Instagram



@wrwc on Twitter

www.wrwc.org | 45 Eagle Street, Suite 202, Providence, RI 02909

Woonasquatucket River Watershed Council

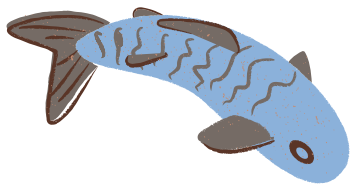
DONOR SPOTLIGHT



John Flaherty
WRWC Board Member

Deputy Director, Grow Smart RI

Since the start of 2020, I have been a member of the Returning River Herring Society, which means I donate monthly to the WRWC. While I can't swim up fish ladders along with the 40,000 actual herrings each year, I'm able to support the WRWC's work with a contribution each month that really adds up. Donating monthly makes sense, both for me and for the WRWC. Please consider joining me as a Returning River Herring...and if you can master the fish ladders, let us know!



Knowing that you are investing in the WRWC allows us to focus on transforming the places we live, work, and enjoy through our many programs that serve Rhode Islanders. **We are grateful to John and everyone else who has become a monthly donor.**

Please visit wrwc.org/ways-to-give to become a Returning River Herring today!

You are the River Hero who makes real change happen!

WRWC leverages millions of project-specific dollars to restore the Watershed and benefit communities, but those dollars do not keep us going day to day. All along the Woonasquatucket River, from Glocester to Providence, your tax-deductible contributions help us build partnerships and projects that revitalize communities.

We thank and celebrate you and all of our River Hero donors who have supported us in 2020, with special recognition to our most generous contributors:

Great Blue Heron Society \$5,000+ Painted Turtle Society

- ★ Armory Revival Company
- Crankstart Foundation
- ★ David C. Isenberg Family Fund
- ★ Foundry Associates
- ★ Fuss & O'Neill
- June Rockwell Levy Foundation
- Kelson Foundation
- Lorber Foundation
- Mary Dexter Chafee Fund
- Nordson Corporation Foundation
- ★ Barry & Becci Preston
- Rhode Island Foundation
- Clay Rockefeller & Manya Rubinstein
- Dr. Rebecca Silliman
- Town of Smithfield
- United Way of Rhode Island

- \$1,000-\$4,999**
- Dean & Lisa Audet
 - Bank Rhode Island
 - Betty Bourret
 - ★ Cathedral Art Metal Co., Inc.
 - ★ Contech Medical, Inc.
 - Ecogy Energy
 - Regina Espenshade & Gene Hix
 - Kathie Florsheim
 - Raymond & Monica Foulkes
 - Richard T. Gilbane
 - John & Renee Hake
 - Almon & Suzanne Hall
 - ★ Anne Holland
 - Bill Lawrence
 - Jennifer Lisi
 - Maine Beer Company
 - Harry Margolis
 - Roy P. Najecki
 - Narragansett Bay Wheelmen

- Ocean State Charities Trust
- Laureen Ratti
 - River Network
 - Peggy & Henry Sharpe
 - Jane & Deming Sherman
 - Sophaya
 - Studio MEJA Architecture
 - Doug Stephens & Linda Stanich
 - Sweet Birch Consulting
 - Nancy Wheeler

River Otter Society \$500-\$999

- Anonymous
- Steve Bautista
- Ronald Cataldo
- DiCenzo, Inc.
- Robert Edgren
- John Flaherty
- Kim David Greenwood
- Theo Meyer

- A. Nony Mous
- Nordic Group, Inc.
- Cynthia Patterson
- Merrill W. Sherman
- Curt Spalding & Patrice Milos-Spalding
- Stantec
- The 903

Bluegill Society \$250-\$499

- Russell Chateaufneuf
- Jill Davidson & Kevin Eberman
- Jill Davis
- Carol Dorros
- Brock Gibian
- Charles & Leslie Gordon
- Michael Hanley
- Mark & Julia Van Noppen
- Ocean State Metals
- Timothy O'Connor
- Tony Simon
- Jonathan Stone

★ Donors with multi-year commitments

Our work continues because you are committed to the Woonasquatucket Watershed!
Please donate today. Here's how!

Send in your contribution in the **enclosed envelope**.

Visit wrwc.org/ways-to-give to contribute online safely and securely.

Contact Development Associate Jill Davidson at jdavidson@wrwc.org for more information.

www.wrwc.org | 45 Eagle Street, Suite 202, Providence, RI 02909